

Recombinant Human IFIH1 Protein (Met1-Asp1025), N-His-tagged

Cat. No. IFIH1-0073H Lot. No. (See product label)

SPECIFICATION

Product Overview	Recombinant human IFIH1 (Met1-Asp1025) was fused with the N-terminal His tag and was expressed in Baculovirus-Insect cells.
Species	Human
Source	Insect Cells
Protein Length	Met1-Asp1025
Form	Lyophilized powder/frozen liquid
Molecular Mass	113.75 kDa
Purity	>90% as determined by SDS-PAGE
Notes	For research use only.
Storage	Use a manual defrost freezer and avoid repeated freeze thaw cycles. Store at 2 to 8 centigrade for one week. Store at -20 to -80 centigrade for twelve months from the date of receipt.
Storage Buffer	Supplied as solution form in 20 mM Tris-HCl, pH8.0, 100 mM NaCl, 1 mM DTT, 0.1 mM EDTA.

 Tel: 1-631-559-9269 1-516-512-3133

 Email: info@creative-biomart.com  Fax: 1-631-938-8127

 45-1 Ramsey Road, Shirley, NY 11967, USA

Reconstitution Reconstitute in sterile water for a stock solution.

Shipping They are shipped out with dry ice/blue ice unless customers require otherwise.

GENE INFORMATION

Gene Name [IFIH1 interferon induced with helicase C domain 1 \[Homo sapiens \(human\) \]](#)

Official Symbol [IFIH1](#)

Synonyms

IFIH1; interferon induced with helicase C domain 1; interferon-induced helicase C domain-containing protein 1; helicard; Hlcd; IDDM19; MDA 5; MDA5; CADM-140 autoantigen; helicase with 2 CARD domains; RNA helicase-DEAD box protein 116; murabutide down-regulated protein; DEAD/H (Asp-Glu-Ala-Asp/His) box polypeptide; melanoma differentiation associated protein-5; melanoma differentiation-associated protein 5; interferon-induced with helicase C domain protein 1; clinically amyopathic dermatomyositis autoantigen 140 kDa; MDA-5; MGC133047;

Gene ID [64135](#)

mRNA Refseq [NM_022168](#)

Protein Refseq [NP_071451](#)

MIM [606951](#)

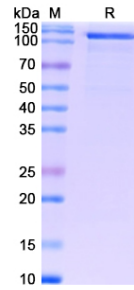
UniProt ID [Q9BYX4](#)

 Tel: 1-631-559-9269 1-516-512-3133

 Email: info@creative-biomart.com  Fax: 1-631-938-8127

 45-1 Ramsey Road, Shirley, NY 11967, USA

SDS-PAGE



 Tel: 1-631-559-9269 1-516-512-3133

 Email: info@creative-biomart.com  Fax: 1-631-938-8127

 45-1 Ramsey Road, Shirley, NY 11967, USA