

Recombinant Human IFITM1 Protein, Myc/DDK-tagged, C13 and N15-labeled

Cat. No. IFITM1-4220H **Lot. No.** (See product label)

SPECIFICATION

Product Overview	IFITM1 MS Standard C13 and N15-labeled recombinant protein (NP_003632) with a C-terminal MYC/DDK tag, was expressed in HEK293 cells.
Species	Human
Source	HEK293
Description	IFITM1 (Interferon Induced Transmembrane Protein 1) is a Protein Coding gene. Diseases associated with IFITM1 include Influenza and West Nile Virus. Among its related pathways are Interferon gamma signaling and Innate Immune System. Gene Ontology (GO) annotations related to this gene include obsolete signal transducer activity, downstream of receptor. An important paralog of this gene is IFITM3.
Molecular Mass	13.9 kDa
AA Sequence	MHKEEHEVAVLGAPPSTILPRSTVINIHSETSVPDHVVWSLFNTLFLNWCCCLGFIAFA YSVKSRDRKMVGDTVGAQAYASTAKCLNIWALILGILMTIGIFILLLVFGSVTVYHIMLQI IQEKRGYTRTRPLEQKLISEEDLAANDILDYKDDDDKV
Purity	> 80% as determined by SDS-PAGE and Coomassie blue staining
Stability	Stable for 3 months from receipt of products under proper storage and handling conditions.

 Tel: 1-631-559-9269 1-516-512-3133

 Email: info@creative-biomart.com  Fax: 1-631-938-8127

 45-1 Ramsey Road, Shirley, NY 11967, USA

Storage	Store at -80 centigrade. Avoid repeated freeze-thaw cycles.
Concentration	50 µg/mL as determined by BCA
Storage Buffer	100 mM glycine, 25 mM Tris-HCl, pH 7.3.
GENE INFORMATION	
Gene Name	IFITM1 interferon induced transmembrane protein 1 [Homo sapiens (human)]
Official Symbol	IFITM1
Synonyms	IFITM1; interferon induced transmembrane protein 1; IFI17, interferon induced transmembrane protein 1 (9 27); interferon-induced transmembrane protein 1; 9 27; CD225; leu-13 antigen; interferon-induced protein 17; interferon-inducible protein 9-27; 9-27; IFI17; LEU13;
Gene ID	8519
mRNA Refseq	NM_003641
Protein Refseq	NP_003632
MIM	604456
UniProt ID	P13164

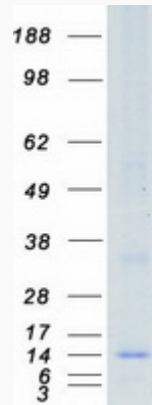
 Tel: 1-631-559-9269 1-516-512-3133

 Email: info@creative-biomart.com  Fax: 1-631-938-8127

 45-1 Ramsey Road, Shirley, NY 11967, USA



SDS-PAGE



Tel: 1-631-559-9269 1-516-512-3133

Email: info@creative-biomart.com Fax: 1-631-938-8127

45-1 Ramsey Road, Shirley, NY 11967, USA