

Active Recombinant Chicken IFNA protein, His-GST-tagged

Cat. No. IFNA-1128C Lot. No. (See product label)

SPECIFICATION

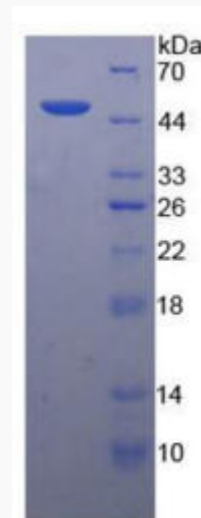
Product Overview	Active Recombinant Chicken IFNA protein(47-191 aa), fused with N-terminal His tag and GST tag, was expressed in E.coli.
Species	Chicken
Source	E.coli
ProteinLength	47-191 aa
Form	PBS, pH7.4, containing 0.01% SKL, 5% Trehalose.
Bio-activity	<p>Interferon-alpha (IFNa), also known as leukocyte interferon, represents a group of related but distinct proteins that share over 95% amino acid sequence homology. They are members of the type I interferon family which share a common cell surface receptor composed of two subunits. IFN-α has both anti-viral and immunomodulatory activities on target cells. To test the effect of IFNa on cell apoptosis, A549 cells were seeded into triplicate wells of 96-well plates at a density of 4,000 cells/well and allowed to attach overnight, then the medium was replaced with various concentrations of recombinant chicken IFNa diluted with 5% serum standard DMEM. After incubated for 72h, cells were observed by inverted microscope and cell proliferation was measured by Cell Counting Kit-8 (CCK-8). Briefly, 10 μof CCK-8 solution was added to each well of the plate, then the absorbance at 450 nm was measured using a microplate reader after incubating the plate for 1-4 hours at 37°C. Apoptosis of A549 cells after incubation with IFNa for 72h observed by inverted</p>

 Tel: 1-631-559-9269 1-516-512-3133

 Email: info@creative-biomart.com  Fax: 1-631-938-8127

 45-1 Ramsey Road, Shirley, NY 11967, USA

	microscope.
Molecular Mass	47.0kDa
Endotoxin	<1.0EU per 1µg (determined by the LAL method).
Purity	>95%
Storage	Avoid repeated freeze/thaw cycles. Store at 2-8°C for one month. Store at -20°C for 12 months. Aliquot and store at -80°C for 12 month.
Reconstitution	It is recommended that sterile water be added to the vial to prepare a stock solution of 0.2 ug/ul. Centrifuge the vial at 4°C before opening to recover the entire contents.

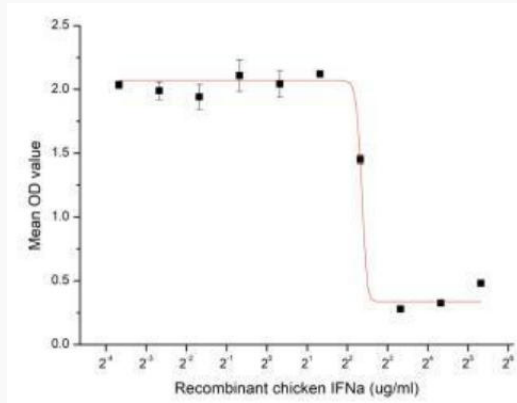
SDS-PAGE


Tel: 1-631-559-9269 1-516-512-3133

Email: info@creative-biomart.com Fax: 1-631-938-8127

45-1 Ramsey Road, Shirley, NY 11967, USA

Activity



 Tel: 1-631-559-9269 1-516-512-3133

 Email: info@creative-biomart.com  Fax: 1-631-938-8127

 45-1 Ramsey Road, Shirley, NY 11967, USA