

## Recombinant Porcine IFNA1 Protein, His-tagged

Cat. No. IFNA1-01P Lot. No. (See product label)

### SPECIFICATION

<b>Product Overview</b>	Recombinant porcine IFN-alpha 1, fused to His-tag at C-terminus, was expressed in HEK293 and purified by using conventional chromatography techniques.
<b>Species</b>	Porcine
<b>Source</b>	HEK293
<b>ProteinLength</b>	24-189
<b>Description</b>	Produced by macrophages, IFN-alpha have antiviral activities. Interferon stimulates the production of two enzymes: a protein kinase and an oligoadenylate synthetase.
<b>Form</b>	Liquid
<b>Molecular Mass</b>	20.2kDa (176aa)
<b>AA Sequence</b>	CDLPQTHSLAHTRALRLLAQMRRISPFSCLDHRRDFGSPHEAFGGNQVQKAQAMAL VHEMLQQTFQLFSTEGSAAAWNESLLHQFCTGLDQQLRDLEACVMQEAGLEGTP LEEDSILAVRKYFHRLTLYLQEKSYSPCAWEIVRAEVMRSFSSSRNLQDRLRKKE
<b>Endotoxin</b>	< 1 EU/μg of protein (determined by LAL method)
<b>Purity</b>	> 90 % by SDS-PAGE
<b>Applications</b>	SDS-PAGE

 Tel: 1-631-559-9269 1-516-512-3133

 Email: [info@creative-biomart.com](mailto:info@creative-biomart.com)  Fax: 1-631-938-8127

 45-1 Ramsey Road, Shirley, NY 11967, USA

<b>Storage</b>	Can be stored at +2 to +8 centigrade for 1 week. For long term storage, aliquot and store at -20 to -80 centigrade. Avoid repeated freezing and thawing cycles.
----------------	---

<b>Concentration</b>	1 mg/mL
----------------------	---------

<b>Storage Buffer</b>	PBS (pH 7.4) containing 10% glycerol
-----------------------	--------------------------------------

## GENE INFORMATION

<b>Gene Name</b>	IFNA1 interferon, alpha 1 [ <i>Sus scrofa</i> (pig) ]
------------------	---

<b>Official Symbol</b>	IFNA1
------------------------	-------

<b>Synonyms</b>	IFNA1; interferon, alpha 1; IFN1@; IFN-ALPHA-1; interferon alpha-1; IFN-alpha-6; interferon-alpha; interferon-alpha-6
-----------------	---

<b>Gene ID</b>	397686
----------------	--------

<b>mRNA Refseq</b>	NM_214393
--------------------	-----------

<b>Protein Refseq</b>	NP_999558
-----------------------	-----------

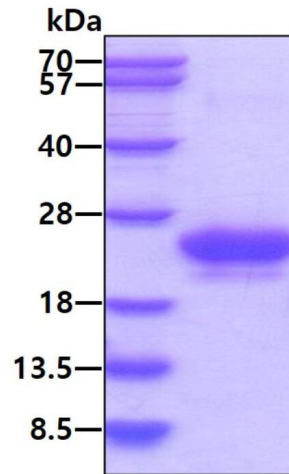
<b>UniProt ID</b>	Q6VAB8
-------------------	--------

 Tel: 1-631-559-9269 1-516-512-3133

 Email: [info@creative-biomart.com](mailto:info@creative-biomart.com)  Fax: 1-631-938-8127

 45-1 Ramsey Road, Shirley, NY 11967, USA

SDS-PAGE



3  $\mu$ g by SDS-PAGE under reducing condition and visualized by coomassie blue stain

 Tel: 1-631-559-9269 1-516-512-3133

 Email: [info@creative-biomart.com](mailto:info@creative-biomart.com)  Fax: 1-631-938-8127

 45-1 Ramsey Road, Shirley, NY 11967, USA