

# Recombinant Full Length Human IFNA1 Protein, C-Flag-tagged

Cat. No. IFNA1-1816HFL Lot. No. (See product label)

## SPECIFICATION

<b>Product Overview</b>	Recombinant Full Length Human IFNA1 Protein, fused to Flag-tag at C-terminus, was expressed in Mammalian cells.
<b>Species</b>	Human
<b>Source</b>	Mammalian Cells
<b>Description</b>	This gene is a member of the alpha interferon gene cluster on chromosome 9. The encoded cytokine is a member of the type I interferon family that is produced in response to viral infection as a key part of the innate immune response with potent antiviral, antiproliferative and immunomodulatory properties. This cytokine, like other type I interferons, binds a plasma membrane receptor made of IFNAR1 and IFNAR2 that is ubiquitously expressed, and thus is able to act on virtually all body cells. This cytokine is upregulated in preeclamptic placentas and is thought to be a mediator of preeclampsia.
<b>Form</b>	25 mM Tris HCl, pH 7.3, 100 mM glycine, 10% glycerol.
<b>Molecular Mass</b>	19.3 kDa
<b>AA Sequence</b>	MASPFALLMALVVL SCKSSCSL GCDLPETHSLDNRR TLMLLAQMSRISPSSCLMDR HDFGFPQEEFDGNQ FQKAPAI SVLHELIIQQIFNLFTTKDSSAAWDEDLLDKFCTELY QQLNDLEACVMQEERVGETPLMNADSI LAVKKYFR RITLYLTEKKYSPCAWEVVRA EIMRSLSLSTNLQERLRRKE TRTRPLEQKLI SEEDLAANDILDYKDDDDKV

 Tel: 1-631-559-9269 1-516-512-3133

 Email: [info@creative-biomart.com](mailto:info@creative-biomart.com)  Fax: 1-631-938-8127

 45-1 Ramsey Road, Shirley, NY 11967, USA

<b>Purity</b>	> 80% as determined by SDS-PAGE and Coomassie blue staining.
<b>Stability</b>	Stable for 12 months from the date of receipt of the product under proper storage and handling conditions. Avoid repeated freeze-thaw cycles.
<b>Storage</b>	Store at -80 centigrade.
<b>Concentration</b>	>50 ug/mL as determined by microplate BCA method.
<b>Preparation</b>	Recombinant protein was captured through anti-DDK affinity column followed by conventional chromatography steps.
<b>Protein Families</b>	Druggable Genome
<b>Protein Pathways</b>	Antigen processing and presentation, Autoimmune thyroid disease, Cytokine-cytokine receptor interaction, Cytosolic DNA-sensing pathway, Jak-STAT signaling pathway, Natural killer cell mediated cytotoxicity, Regulation of autophagy, RIG-I-like receptor signaling pathway, Toll-like receptor signaling pathway
<b>Full Length</b>	Full L.
<b>GENE INFORMATION</b>	
<b>Gene Name</b>	IFNA1 interferon alpha 1 [ Homo sapiens (human) ]
<b>Official Symbol</b>	IFNA1
<b>Synonyms</b>	IFL; IFN; IFNA@; IFNA13; IeIF D; IFN-ALPHA; IFN-alphaD
<b>Gene ID</b>	3439

 Tel: 1-631-559-9269 1-516-512-3133

 Email: [info@creative-biomart.com](mailto:info@creative-biomart.com)  Fax: 1-631-938-8127

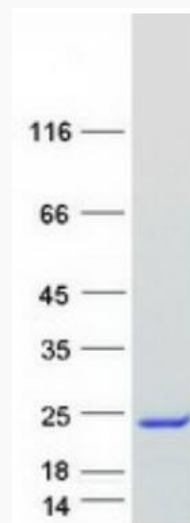
 45-1 Ramsey Road, Shirley, NY 11967, USA

mRNA Refseq [NM\\_024013.3](#)

Protein Refseq [NP\\_076918.1](#)

MIM [147660](#)

UniProt ID [P01562](#)



Coomassie blue staining of purified IFNA1 protein.

Tel: 1-631-559-9269 1-516-512-3133

Email: [info@creative-biomart.com](mailto:info@creative-biomart.com) Fax: 1-631-938-8127

45-1 Ramsey Road, Shirley, NY 11967, USA