

Recombinant Human IFNA1 protein, His-tagged

Cat. No. IFNA1-5633H Lot. No. (See product label)

SPECIFICATION

Product Overview	Recombinant Human IFNA1 protein(P01562)(24-189aa), fused with C-terminal His tag, was expressed in E.coli.
Species	Human
Source	E.coli
ProteinLength	24-189a.a.
Tag	His
Form	If the delivery form is liquid, the default storage buffer is Tris/PBS-based buffer, 5%-50% glycerol. If the delivery form is lyophilized powder, the buffer before lyophilization is Tris/PBS-based buffer, 6% Trehalose, pH 8.0.
Molecular Mass	26.3 kDa
Purity	Greater than 90% as determined by SDS-PAGE.
Storage	Store at -20°C/-80°C upon receipt, aliquoting is necessary for mutiple use. Avoid repeated freeze-thaw cycles.
Reconstitution	We recommend that this vial be briefly centrifuged prior to opening to bring the contents to the bottom. Please reconstitute protein in deionized sterile water to a concentration of 0.1-1.0 mg/mL.We recommend to add 5-50% of glycerol (final

 Tel: 1-631-559-9269 1-516-512-3133

 Email: info@creative-biomart.com  Fax: 1-631-938-8127

 45-1 Ramsey Road, Shirley, NY 11967, USA

concentration) and aliquot for long-term storage at -20°C/-80°C.

AA Sequence

CDLPETHSLDNRRTLMLLAQMSRISPSSCLMDRHDFGFPQEEFDGNQFQKAPAIKV
LHELIQQIFNLFSTTKDSSAAWDEDLLDKFCTELYQQLNDLEACVMQEERVGETPLMN
ADSILAVKKYFRITLTLTEKKYSPCAWEVVRAEIMRSLSLSTNLQERLRRKE

GENE INFORMATION

Gene Name

IFNA1 interferon, alpha 1 [Homo sapiens]

Official Symbol

IFNA1

Synonyms

IFNA1; interferon, alpha 1; interferon alpha-1/13; IFL; IFN; IFN ALPHA; IFN alpha 1b;
IFN alphaD; IFNA13; IFNA@; interferon alpha 1b; IeIF D; IFN-alpha 1b; IFN-alpha-
1/13; interferon-alpha1; interferon alpha-D; IFN-ALPHA; IFN-alphaD; MGC138207;
MGC138505; MGC138507;

Gene ID

3439

mRNA Refseq

NM_024013

Protein Refseq

NP_076918

MIM

147660

UniProt ID

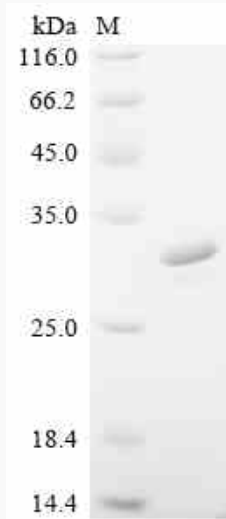
P01562

 Tel: 1-631-559-9269 1-516-512-3133

 Email: info@creative-biomart.com  Fax: 1-631-938-8127

 45-1 Ramsey Road, Shirley, NY 11967, USA

SDS-PAGE



 Tel: 1-631-559-9269 1-516-512-3133

 Email: info@creative-biomart.com  Fax: 1-631-938-8127

 45-1 Ramsey Road, Shirley, NY 11967, USA