

Recombinant Human IFNA2 Protein, His/GST-tagged

Cat. No. IFNA2-170H Lot. No. (See product label)

SPECIFICATION

Product Overview	Recombinant Human IFNA2(Cys24~Glu188) fused with His/GST tag at N-terminal was expressed in E. coli.
Species	Human
Source	E.coli
ProteinLength	Cys24~Glu188
Description	This gene is a member of the alpha interferon gene cluster on chromosome 9. The encoded protein is a cytokine produced in response to viral infection. Use of the recombinant form of this protein has been shown to be effective in reducing the symptoms and duration of the common cold.
Form	PBS, pH7.4, containing 0.01% SKL, 1mM DTT, 5% Trehalose and Proclin300.
Molecular Mass	51.6kDa
Identity	Reconstitute in PBS or others
Endotoxin	<1.0EU per 1g (determined by the LAL method)
Purity	> 95%
Applications	Positive Control; Immunogen; SDS-PAGE; WB.

 Tel: 1-631-559-9269 1-516-512-3133

 Email: info@creative-biomart.com  Fax: 1-631-938-8127

 45-1 Ramsey Road, Shirley, NY 11967, USA

If bio-activity of the protein is needed, please check active protein

Stability

The thermal stability is described by the loss rate. The loss rate was determined by accelerated thermal degradation test, that is, incubate the protein at 37 centigrade for 48h, and no obvious degradation and precipitation were observed. The loss rate is less than 5% within the expiration date under appropriate storage condition.

Storage

Avoid repeated freeze/thaw cycles. Store at 2-8 centigrade for one month. Aliquot and store at -80 centigrade for 12 months.

Reconstitution

Reconstitute in PBS or others

GENE INFORMATION

Gene Name

[IFNA2 interferon, alpha 2 \[Homo sapiens \]](#)

Official Symbol

[IFNA2](#)

Synonyms

IFNA2; interferon, alpha 2; interferon alpha-2; alpha 2a interferon; IFN alphaA; IFNA; interferon alpha 2b; interferon alpha A; IeIF A; IFN-alpha-2; alpha-2a interferon; INFA2; IFNA2B; IFN-alphaA; MGC125764; MGC125765;

Gene ID

[3440](#)

mRNA Refseq

[NM_000605](#)

Protein Refseq

[NP_000596](#)

MIM

[147562](#)

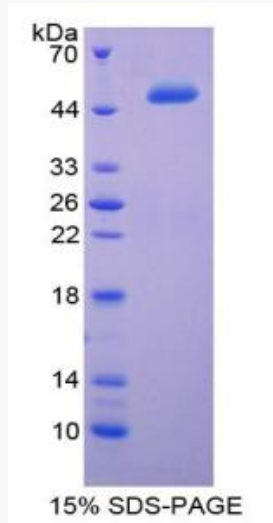
UniProt ID

[P01563](#)

 Tel: 1-631-559-9269 1-516-512-3133

 Email: info@creative-biomart.com  Fax: 1-631-938-8127

 45-1 Ramsey Road, Shirley, NY 11967, USA



 Tel: 1-631-559-9269 1-516-512-3133

 Email: info@creative-biomart.com  Fax: 1-631-938-8127

 45-1 Ramsey Road, Shirley, NY 11967, USA