

Recombinant Full Length Human IFNA2 Protein, C-Flag-tagged

Cat. No. IFNA2-1913HFL Lot. No. (See product label)

SPECIFICATION

Product Overview	Recombinant Full Length Human IFNA2 Protein, fused to Flag-tag at C-terminus, was expressed in Mammalian cells.
Species	Human
Source	Mammalian Cells
Description	<p>This gene is a member of the alpha interferon gene cluster on chromosome 9. The encoded cytokine is a member of the type I interferon family that is produced in response to viral infection as a key part of the innate immune response with potent antiviral, antiproliferative and immunomodulatory properties. This cytokine, like other type I interferons, binds a plasma membrane receptor made of IFNAR1 and IFNAR2 that is ubiquitously expressed, and thus is able to act on virtually all body cells. The encoded protein is effective in reducing the symptoms and duration of the common cold and in treating many types of cancer, including some hematological malignancies and solid tumors. A deficiency of type I interferon in the blood is thought to be a hallmark of severe COVID-19 and may provide a rationale for a combined therapeutic approach.</p>
Form	25 mM Tris HCl, pH 7.3, 100 mM glycine, 10% glycerol.
Molecular Mass	21.4 kDa
AA Sequence	MALTFALLVALLVLSCKSSCSVGCGLPQTHSLGSRRTLMLLAQMRRISLFSCLKDRH DFGFPQEEFGNQF QKAETIPVLHEMIQQIFNLFSTKDSSAAWDETL LDKFYTELYQQ

 Tel: 1-631-559-9269 1-516-512-3133

 Email: info@creative-biomart.com  Fax: 1-631-938-8127

 45-1 Ramsey Road, Shirley, NY 11967, USA

LNDLEACVIQGVGVTTETPLMKEDSIL AVRKYFQRITLYLKEKKYSPCAWEVVRAEIM
RSFSLSTNLQESLRSKE TRTRPLEQKLISEEDLAANDILDYKDDDDKV

Purity	> 80% as determined by SDS-PAGE and Coomassie blue staining.
Stability	Stable for 12 months from the date of receipt of the product under proper storage and handling conditions. Avoid repeated freeze-thaw cycles.
Storage	Store at -80 centigrade.
Concentration	>50 ug/mL as determined by microplate BCA method.
Preparation	Recombinant protein was captured through anti-DDK affinity column followed by conventional chromatography steps.
Protein Families	Druggable Genome, Secreted Protein
Protein Pathways	Antigen processing and presentation, Autoimmune thyroid disease, Cytokine-cytokine receptor interaction, Cytosolic DNA-sensing pathway, Jak-STAT signaling pathway, Natural killer cell mediated cytotoxicity, Regulation of autophagy, RIG-I-like receptor signaling pathway, Toll-like receptor signaling pathway
Full Length	Full L.

GENE INFORMATION

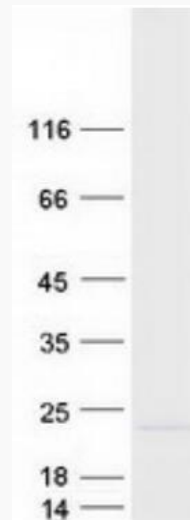
Gene Name	IFNA2 interferon alpha 2 [Homo sapiens (human)]
Official Symbol	IFNA2
Synonyms	IFNA; IFNA2B; IeIF A; IFN-alphaA; IFN-alpha-2

 Tel: 1-631-559-9269 1-516-512-3133

 Email: info@creative-biomart.com  Fax: 1-631-938-8127

 45-1 Ramsey Road, Shirley, NY 11967, USA

Gene ID	3440
mRNA Refseq	NM_000605.4
Protein Refseq	NP_000596.2
MIM	147562
UniProt ID	P01563



Coomassie blue staining of purified IFNA2 protein.

Tel: 1-631-559-9269 1-516-512-3133

Email: info@creative-biomart.com Fax: 1-631-938-8127

45-1 Ramsey Road, Shirley, NY 11967, USA