

## Recombinant Human IFNA2 protein, His-KSI-tagged

Cat. No. IFNA2-7554H Lot. No. (See product label)

### SPECIFICATION

<b>Product Overview</b>	Recombinant Human IFNA2 protein(P01563)(24-188aa), fused with N-terminal His and KSI tag, was expressed in E.coli.
<b>Species</b>	Human
<b>Source</b>	E.coli
<b>ProteinLength</b>	24-188aa
<b>Form</b>	If the delivery form is liquid, the default storage buffer is Tris/PBS-based buffer, 5%-50% glycerol. If the delivery form is lyophilized powder, the buffer before lyophilization is Tris/PBS-based buffer, 6% Trehalose, pH 8.0.
<b>Molecular Mass</b>	34.6 kDa
<b>Purity</b>	Greater than 85% as determined by SDS-PAGE.
<b>Storage</b>	Store at -20°C/-80°C upon receipt, aliquoting is necessary for mutiple use. Avoid repeated freeze-thaw cycles.
<b>Reconstitution</b>	We recommend that this vial be briefly centrifuged prior to opening to bring the contents to the bottom. Please reconstitute protein in deionized sterile water to a concentration of 0.1-1.0 mg/mL. We recommend to add 5-50% of glycerol (final concentration) and aliquot for long-term storage at -20°C/-80°C.

 Tel: 1-631-559-9269 1-516-512-3133

 Email: [info@creative-biomart.com](mailto:info@creative-biomart.com)  Fax: 1-631-938-8127

 45-1 Ramsey Road, Shirley, NY 11967, USA

**AA Sequence** CDLPQTHSLGSRRTLMLLAQMRKISLFSCLKDRHDFGFPQEEFGNQFQKAETIPVLH  
 EMIQQIFNLFSTKDSSAAWDETLDDKFKYTELYQQLNDLEACVIQGVGTETPLMKED  
 SILAVRKYFQRITLYLKEKKYSPCAWEVVRAEIMRSFSLSTNLQESLSKE

## GENE INFORMATION

**Gene Name** IFNA2 interferon, alpha 2 [ Homo sapiens ]

**Official Symbol** IFNA2

**Synonyms** IFNA2; interferon, alpha 2; interferon alpha-2; alpha 2a interferon; IFN alphaA; IFNA;  
 interferon alpha 2b; interferon alpha A; IeIF A; IFN-alpha-2; alpha-2a interferon;  
 INFA2; IFNA2B; IFN-alphaA; MGC125764; MGC125765;

**Gene ID** 3440

**mRNA Refseq** NM\_000605

**Protein Refseq** NP\_000596

**MIM** 147562

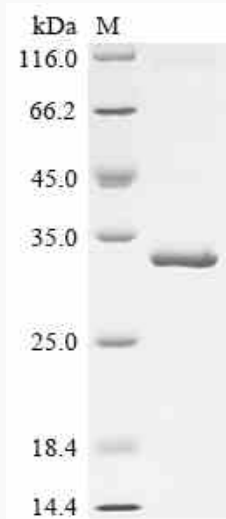
**UniProt ID** P01563

 Tel: 1-631-559-9269 1-516-512-3133

 Email: [info@creative-biomart.com](mailto:info@creative-biomart.com)  Fax: 1-631-938-8127

 45-1 Ramsey Road, Shirley, NY 11967, USA

**SDS-PAGE**



 Tel: 1-631-559-9269 1-516-512-3133

 Email: [info@creative-biomart.com](mailto:info@creative-biomart.com)  Fax: 1-631-938-8127

 45-1 Ramsey Road, Shirley, NY 11967, USA