

## Recombinant Human IFNA21 Protein (24-189 aa), His-tagged

Cat. No. IFNA21-1424H Lot. No. (See product label)

### SPECIFICATION

<b>Product Overview</b>	Recombinant Human IFNA21 Protein (24-189 aa) is produced by Yeast expression system. This protein is fused with a 6xHis tag at the N-terminal. Research Area: Immunology. Protein Description: Full Length of Mature Protein.
<b>Species</b>	Human
<b>Source</b>	Yeast
<b>ProteinLength</b>	24-189 aa
<b>Description</b>	Produced by macrophages, IFN-alpha have antiviral activities. Interferon stimulates the production of two enzymes: a protein kinase and an oligoadenylate synthetase.
<b>Form</b>	Tris-based buffer,50% glycerol
<b>Molecular Mass</b>	21.3 kDa
<b>AA Sequence</b>	CDLPQTHSLGNRRALILLAQMGRISPFSCCLKDRHDFGFPQEEFDGNQFQKAQAISVL HEMIQQTFNLFSTKDSSATWEQSLLEKFSTELNQQQLNDLEACVIQEVGVEETPLMNV DSILAVKKYFQRITLYLTEKKYSPCAWEVVRAEIMRSFSLSKIFQERLRRKE
<b>Purity</b>	> 90% as determined by SDS-PAGE.
<b>Notes</b>	Repeated freezing and thawing is not recommended. Store working aliquots at 4 centigrade for up to one week.

 Tel: 1-631-559-9269 1-516-512-3133

 Email: [info@creative-biomart.com](mailto:info@creative-biomart.com)  Fax: 1-631-938-8127

 45-1 Ramsey Road, Shirley, NY 11967, USA

**Storage**

The shelf life is related to many factors, storage state, buffer ingredients, storage temperature and the stability of the protein itself. Generally, the shelf life of liquid form is 6 months at -20 centigrade/-80 centigrade. The shelf life of lyophilized form is 12 months at -20 centigrade/-80 centigrade.

**Concentration**

A hardcopy of COA with reconstitution instruction is sent along with the products.

## GENE INFORMATION

**Gene Name**

IFNA21 interferon, alpha 21 [ Homo sapiens ]

**Official Symbol**

IFNA21

**Synonyms**

IFNA21; IFN alphas; IFN-alpha-21; LeIF F; leIF-F; IFN-aphal; MGC126687; MGC126689;

**Gene ID**

3452

**mRNA Refseq**

NM\_002175

**Protein Refseq**

NP\_002166

**MIM**

147584

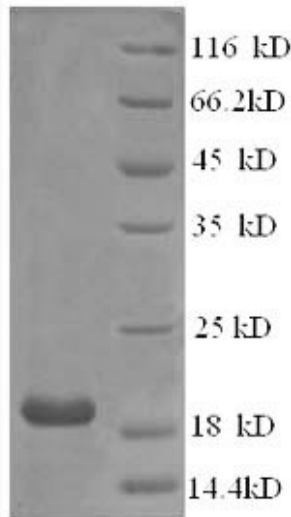
**UniProt ID**

P01568

 Tel: 1-631-559-9269 1-516-512-3133

 Email: [info@creative-biomart.com](mailto:info@creative-biomart.com)  Fax: 1-631-938-8127

 45-1 Ramsey Road, Shirley, NY 11967, USA



(Tris-Glycine gel) Discontinuous SDS-PAGE (reduced) with 5% enrichment gel and 15% separation gel.

 Tel: 1-631-559-9269 1-516-512-3133

 Email: [info@creative-biomart.com](mailto:info@creative-biomart.com)  Fax: 1-631-938-8127

 45-1 Ramsey Road, Shirley, NY 11967, USA