

Recombinant Human IFNA21 Protein, His/GST-tagged

Cat. No. IFNA21-617H Lot. No. (See product label)

SPECIFICATION

Product Overview	Recombinant Human IFNA21(Asp25~Glu189) fused with His/GST tag at N-terminal was expressed in E. coli.
Species	Human
Source	E.coli
ProteinLength	Asp25~Glu189
Description	This gene is a member of the alpha interferon gene cluster on the short arm of chromosome 9. Interferons are cytokines produced in response to viral infection that mediate the immune response and interfere with viral replication. The encoded protein is a type I interferon and may play a specific role in the antiviral response to rubella virus.
Form	PBS, pH7.4, containing 0.01% SKL, 1mM DTT, 5% Trehalose and Proclin300.
Molecular Mass	51.2kDa
Endotoxin	<1.0EU per 1g (determined by the LAL method)
Purity	> 98%
Applications	Positive Control; Immunogen; SDS-PAGE; WB. If bio-activity of the protein is needed, please check active protein.

 Tel: 1-631-559-9269 1-516-512-3133

 Email: info@creative-biomart.com  Fax: 1-631-938-8127

 45-1 Ramsey Road, Shirley, NY 11967, USA

Stability The thermal stability is described by the loss rate. The loss rate was determined by accelerated thermal degradation test, that is, incubate the protein at 37 centigrade for 48h, and no obvious degradation and precipitation were observed. The loss rate is less than 5% within the expiration date under appropriate storage condition.

Storage Avoid repeated freeze/thaw cycles. Store at 2-8 centigrade for one month. Aliquot and store at -80 centigrade for 12 months.

Reconstitution Reconstitute in PBS or others.

GENE INFORMATION

Gene Name IFNA21 interferon, alpha 21 [Homo sapiens]

Official Symbol IFNA21

Synonyms IFNA21; interferon, alpha 21; interferon alpha-21; IFN alpha1; leukocyte interferon protein; IFN-alpha-21; interferon alpha-F; LeIF F; leIF-F; IFN-alpha1; MGC126687; MGC126689;

Gene ID 3452

mRNA Refseq NM_002175

Protein Refseq NP_002166

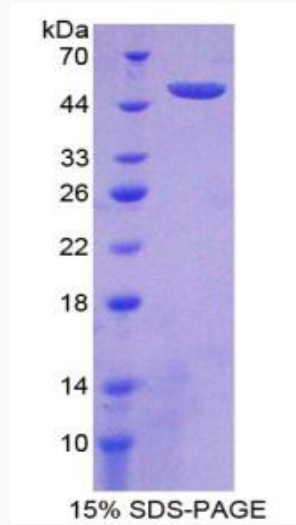
MIM 147584

UniProt ID P01568

 Tel: 1-631-559-9269 1-516-512-3133

 Email: info@creative-biomart.com  Fax: 1-631-938-8127

 45-1 Ramsey Road, Shirley, NY 11967, USA



Tel: 1-631-559-9269 1-516-512-3133

Email: info@creative-biomart.com Fax: 1-631-938-8127

45-1 Ramsey Road, Shirley, NY 11967, USA