

Recombinant Human IFNA5 protein, His-tagged

Cat. No. IFNA5-444H Lot. No. (See product label)

SPECIFICATION

Product Overview	Recombinant Human IFNA5 (P01569) aa. (Leu22~Glu189) fused with His tag was produced in HEK293F cells.
Species	Human
Source	HEK293
ProteinLength	Leu22~Glu189
Form	Freeze-dried powder
Molecular Mass	Predicted Molecular Mass: 21.2kDa; Accurate Molecular Mass: 21kDa as determined by SDS-PAGE reducing conditions.
Endotoxin	<1.0EU per 1ug (determined by the LAL method)
Purity	> 95%
Characteristic	Isoelectric point is 5.4.
Applications	SDS-PAGE; WB; ELISA; IP; CoIP; EMSA; Reporter Assays; Purification; Amine Reactive Labeling
Stability	The thermal stability is described by the loss rate. The loss rate was determined by accelerated thermal degradation test, that is, incubate the protein at 37°C for 48h,

 Tel: 1-631-559-9269 1-516-512-3133

 Email: info@creative-biomart.com  Fax: 1-631-938-8127

 45-1 Ramsey Road, Shirley, NY 11967, USA

and no obvious degradation and precipitation were observed. The loss rate is less than 5% within the expiration date under appropriate storage condition.

Storage

Avoid repeated freeze/thaw cycles. Store at 2-8°C for one month. Aliquot and store at -80°C for 12 months.

Concentration

200ug/mL

Storage buffer

20mM Tris, 150mM NaCl, pH8.0, containing 1mM EDTA, 1mM DTT, 5% Trehalose and Proclin300.

Reconstitution

Reconstitute in 20mM Tris, 150mM NaCl (pH8.0) to a concentration of 0.1-1.0 mg/mL. Do not vortex

GENE INFORMATION

Gene Name

IFNA5 interferon alpha 5 [Homo sapiens (human)]

Official Symbol

IFNA5

Synonyms

IFNA5; interferon alpha 5; INA5; IeIF G; IFN-alphaG; IFN-alpha-5; interferon alpha-61; interferon alpha-G

Gene ID

3442

mRNA Refseq

NM_002169.2

Protein Refseq

NP_002160.1

UniProt ID

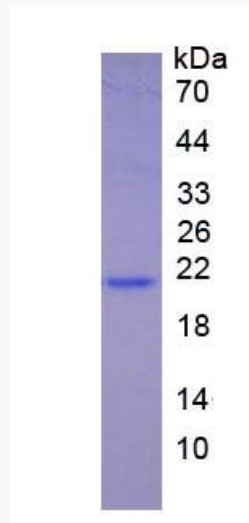
P01569

 Tel: 1-631-559-9269 1-516-512-3133

 Email: info@creative-biomart.com  Fax: 1-631-938-8127

 45-1 Ramsey Road, Shirley, NY 11967, USA

SDS-PAGE



 Tel: 1-631-559-9269 1-516-512-3133

 Email: info@creative-biomart.com  Fax: 1-631-938-8127

 45-1 Ramsey Road, Shirley, NY 11967, USA