

# Recombinant Full Length Human IFNA8 Protein, C-Flag-tagged

Cat. No. IFNA8-1823HFL Lot. No. (See product label)

## SPECIFICATION

<b>Product Overview</b>	Recombinant Full Length Human IFNA8 Protein, fused to Flag-tag at C-terminus, was expressed in Mammalian cells.
<b>Species</b>	Human
<b>Source</b>	Mammalian Cells
<b>Description</b>	Predicted to enable cytokine activity and type I interferon receptor binding activity. Predicted to be involved in several processes, including B cell activation; lymphocyte activation involved in immune response; and positive regulation of peptidyl-serine phosphorylation of STAT protein. Predicted to act upstream of or within defense response to virus. Predicted to be located in extracellular region. Predicted to be active in extracellular space.
<b>Form</b>	25 mM Tris HCl, pH 7.3, 100 mM glycine, 10% glycerol.
<b>Molecular Mass</b>	21.8 kDa
<b>AA Sequence</b>	MALTFYLLVALVLSYKSFSSLGCDLPQTHSLGNRRALILLAQMRRISPFSCCLKDRHD FEFPQEEFDDKQ FQKAQAISVLHEMIQQTFNLFSTKDSSAALDETLLEDFYIELDQQL NDLESCVMQEVGVIESPLMYEDSI LAVRKYFQRITLYLTEKKYSSCAWEVVRAEIMR SFSLINLQKRLKSKE TRTRPLEQKLISEEDLAANDILDYKDDDDKV
<b>Purity</b>	> 80% as determined by SDS-PAGE and Coomassie blue staining.

 Tel: 1-631-559-9269 1-516-512-3133

 Email: [info@creative-biomart.com](mailto:info@creative-biomart.com)  Fax: 1-631-938-8127

 45-1 Ramsey Road, Shirley, NY 11967, USA

<b>Stability</b>	Stable for 12 months from the date of receipt of the product under proper storage and handling conditions. Avoid repeated freeze-thaw cycles.
<b>Storage</b>	Store at -80 centigrade.
<b>Concentration</b>	>50 ug/mL as determined by microplate BCA method.
<b>Preparation</b>	Recombinant protein was captured through anti-DDK affinity column followed by conventional chromatography steps.
<b>Protein Families</b>	Druggable Genome, Secreted Protein
<b>Protein Pathways</b>	Antigen processing and presentation, Autoimmune thyroid disease, Cytokine-cytokine receptor interaction, Cytosolic DNA-sensing pathway, Jak-STAT signaling pathway, Natural killer cell mediated cytotoxicity, Regulation of autophagy, RIG-I-like receptor signaling pathway, Toll-like receptor signaling pathway
<b>Full Length</b>	Full L.

## GENE INFORMATION

<b>Gene Name</b>	IFNA8 interferon alpha 8 [ Homo sapiens (human) ]
<b>Official Symbol</b>	IFNA8
<b>Synonyms</b>	IFN-alphaB
<b>Gene ID</b>	3445
<b>mRNA Refseq</b>	NM_002170.4

 Tel: 1-631-559-9269 1-516-512-3133

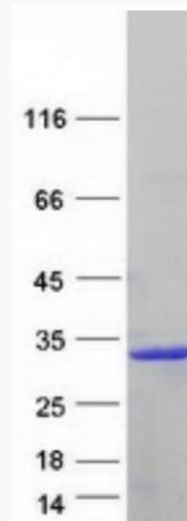
 Email: [info@creative-biomart.com](mailto:info@creative-biomart.com)  Fax: 1-631-938-8127

 45-1 Ramsey Road, Shirley, NY 11967, USA

**Protein Refseq** NP\_002161.2

**MIM** 147568

**UniProt ID** P32881



Coomassie blue staining of purified IFNA8 protein.

 Tel: 1-631-559-9269 1-516-512-3133

 Email: [info@creative-biomart.com](mailto:info@creative-biomart.com)  Fax: 1-631-938-8127

 45-1 Ramsey Road, Shirley, NY 11967, USA