

Recombinant Human IFNAR1 protein, His-Avi-tagged

Cat. No. IFNAR1-181H Lot. No. (See product label)

SPECIFICATION

Product Overview	Recombinant Human IFNAR1 protein(P17181-1)(Lys28-Lys436), fused with C-terminal His and Avi tag, was expressed in HEK293.
Species	Human
Source	HEK293
ProteinLength	Lys28-Lys436
Tag	C-His-Avi
Form	Lyophilized from 0.22µm filtered solution in PBS (pH 7.4). Normally 5% trehalose is added as protectant before lyophilization.
Bio-activity	Immobilized Human IFNAR1, His Tag at 0.5ug/ml (100ul/Well) on the plate. Dose response curve for Anti-IFNAR1 Antibody, hFc Tag with the EC50 of 0.25ug/ml determined by ELISA.
Molecular Mass	The protein has a predicted MW of 50.2 kDa. Due to glycosylation, the protein migrates to 74-95 kDa based on Tris-Bis PAGE result.
Endotoxin	Less than 1EU per µg by the LAL method.
Purity	> 95% as determined by Tris-Bis PAGE;> 95% as determined by HPLC

 Tel: 1-631-559-9269 1-516-512-3133

 Email: info@creative-biomart.com  Fax: 1-631-938-8127

 45-1 Ramsey Road, Shirley, NY 11967, USA

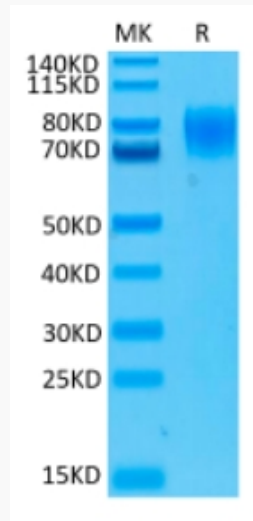
Storage	Reconstituted protein stable at -80°C for 12 months, 4°C for 1 week. Use a manual defrost freezer and avoid repeated freeze-thaw cycles.
Reconstitution	Centrifuge tubes before opening. Reconstituting to a concentration more than 100 µg/ml is recommended. Dissolve the lyophilized protein in distilled water.
GENE INFORMATION	
Gene Name	IFNAR1 interferon (alpha, beta and omega) receptor 1 [Homo sapiens]
Official Symbol	IFNAR1
Synonyms	IFNAR1; interferon (alpha, beta and omega) receptor 1; IFNAR; interferon alpha/beta receptor 1; IFRC; CRF2-1; IFN-R-1; IFN-alpha/beta receptor 1; interferon-beta receptor 1; beta-type antiviral protein; alpha-type antiviral protein; type I interferon receptor 1; cytokine receptor class-II member 1; cytokine receptor family 2 member 1; interferon-alpha/beta receptor alpha chain; AVP; IFNBR; IFN-alpha-REC;
Gene ID	3454
mRNA Refseq	NM_000629
Protein Refseq	NP_000620
MIM	107450
UniProt ID	P17181

 Tel: 1-631-559-9269 1-516-512-3133

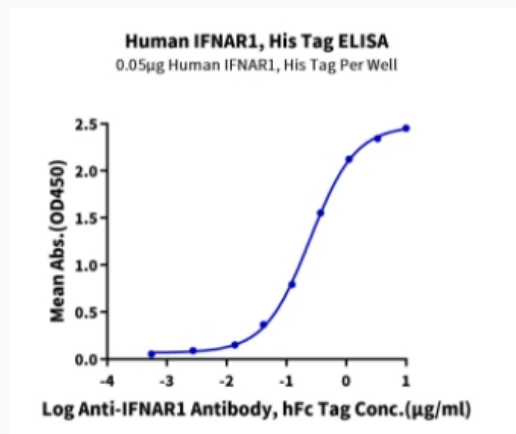
 Email: info@creative-biomart.com  Fax: 1-631-938-8127

 45-1 Ramsey Road, Shirley, NY 11967, USA

Tris-Bis PAGE



ELISA Data



 Tel: 1-631-559-9269 1-516-512-3133

 Email: info@creative-biomart.com  Fax: 1-631-938-8127

 45-1 Ramsey Road, Shirley, NY 11967, USA