

Recombinant Human IFNAR2 protein, His-tagged

Cat. No. IFNAR2-156H Lot. No. (See product label)

SPECIFICATION

Product Overview	Recombinant Human IFNAR2 protein(P48551-2)(Ile27-Lys243), fused with C-terminal His tag, was expressed in HEK293.
Species	Human
Source	HEK293
ProteinLength	Ile27-Lys243
Tag	C-His
Form	Lyophilized from 0.22µm filtered solution in PBS (pH 7.4). Normally 8% trehalose is added as protectant before lyophilization.
Bio-activity	Human IFN alpha/beta R2, His Tag captured on CM5 Chip via anti-his antibody can bind Human IFN alpha 1, hFc Tag with an affinity constant of 11.90 nM as determined in SPR assay (Biacore T200).
Molecular Mass	The protein has a predicted MW of 25.8 kDa. Due to glycosylation, the protein migrates to 40-50 kDa based on Tris-Bis PAGE result.
Endotoxin	Less than 1EU per µg by the LAL method.
Purity	> 95% as determined by Tris-Bis PAGE; > 95% as determined by HPLC

 Tel: 1-631-559-9269 1-516-512-3133

 Email: info@creative-biomart.com  Fax: 1-631-938-8127

 45-1 Ramsey Road, Shirley, NY 11967, USA

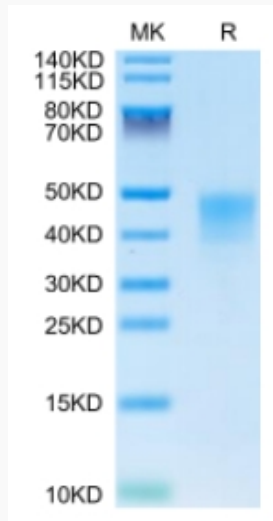
Storage	Reconstituted protein stable at -80°C for 12 months, 4°C for 1 week. Use a manual defrost freezer and avoid repeated freeze-thaw cycles.
Reconstitution	Centrifuge tubes before opening. Reconstituting to a concentration more than 100 µg/ml is recommended. Dissolve the lyophilized protein in distilled water.
GENE INFORMATION	
Gene Name	IFNAR2 interferon (alpha, beta and omega) receptor 2 [Homo sapiens]
Official Symbol	IFNAR2
Synonyms	IFNAR2; interferon (alpha, beta and omega) receptor 2; IFNABR; interferon alpha/beta receptor 2; IFN-R-2; IFN-alpha binding protein; IFN-alpha/beta receptor 2; type I interferon receptor 2; interferon alpha binding protein; human interferon alpha/beta receptor; interferon-alpha/beta receptor beta chain; IFN-R; IFNARB; IFN-alpha-REC;
Gene ID	3455
mRNA Refseq	NM_000874
Protein Refseq	NP_000865
MIM	602376
UniProt ID	P48551

 Tel: 1-631-559-9269 1-516-512-3133

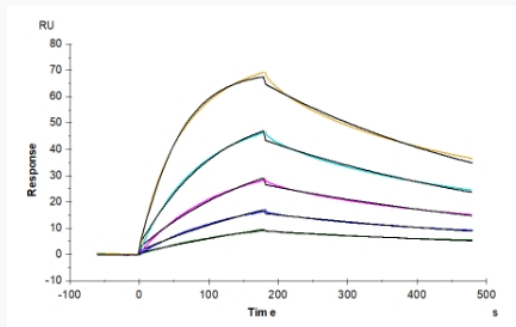
 Email: info@creative-biomart.com  Fax: 1-631-938-8127

 45-1 Ramsey Road, Shirley, NY 11967, USA

Tris-Bis PAGE



SPR Data



 Tel: 1-631-559-9269 1-516-512-3133

 Email: info@creative-biomart.com  Fax: 1-631-938-8127

 45-1 Ramsey Road, Shirley, NY 11967, USA