

## Active Recombinant Human IFNB1 protein

Cat. No. IFNB1-178H Lot. No. (See product label)

### SPECIFICATION

<b>Product Overview</b>	Active Recombinant Human IFNB1 protein(P01574) (Met1-Asn187) was expressed in CHO.
<b>Species</b>	Human
<b>Source</b>	CHO
<b>ProteinLength</b>	1-187 aa
<b>Form</b>	Lyophilized from sterile 50mM Hepes, pH 7.0.
<b>Bio-activity</b>	Measured in antiviral assays using WISH human amnion cells infected with vesicular stomatitisvirus (VSV). The EC50 for this effect is 1-5 pg/mL.
<b>Molecular Mass</b>	The recombinant human IFN $\beta$ consists of 166 amino acids and predicts a molecular mass of 20 KDa. It migrates as an approximately 20-23 KDa band in SDS-PAGE under reducing conditions.
<b>Endotoxin</b>	< 1.0 EU per $\mu$ g of the protein as determined by the LAL method.
<b>Purity</b>	> 95 % as determined by SDS-PAGE
<b>Storage</b>	Store it under sterile conditions at -20°C to -80°C upon receiving. Recommend to aliquot the protein into smaller quantities for optimal storage. Avoid repeated freeze-thaw cycles.

 Tel: 1-631-559-9269 1-516-512-3133

 Email: [info@creative-biomart.com](mailto:info@creative-biomart.com)  Fax: 1-631-938-8127

 45-1 Ramsey Road, Shirley, NY 11967, USA

**Reconstitution** It is recommended that sterile water be added to the vial to prepare a stock solution of 0.2 ug/ul. Centrifuge the vial at 4°C before opening to recover the entire contents.

## GENE INFORMATION

**Gene Name** IFNB1 interferon, beta 1, fibroblast [ Homo sapiens ]

**Official Symbol** IFNB1

**Synonyms** IFNB1; interferon, beta 1, fibroblast; IFNB; interferon beta; IFB; IFF; IFN-beta; fibroblast interferon; MGC96956;

**Gene ID** 3456

**mRNA Refseq** NM\_002176

**Protein Refseq** NP\_002167

**MIM** 147640

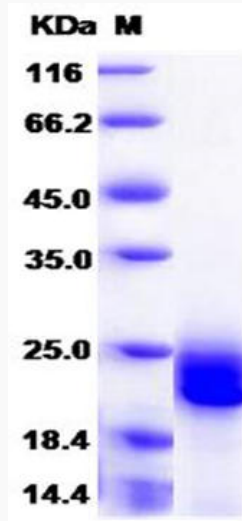
**UniProt ID** P01574

 Tel: 1-631-559-9269 1-516-512-3133

 Email: [info@creative-biomart.com](mailto:info@creative-biomart.com)  Fax: 1-631-938-8127

 45-1 Ramsey Road, Shirley, NY 11967, USA

SDS-PAGE



 Tel: 1-631-559-9269 1-516-512-3133

 Email: [info@creative-biomart.com](mailto:info@creative-biomart.com)  Fax: 1-631-938-8127

 45-1 Ramsey Road, Shirley, NY 11967, USA