

Recombinant Cattle IFNB1 Protein, His-tagged

Cat. No. IFNB1-240C Lot. No. (See product label)

SPECIFICATION

| | |
|-------------------------|---|
| Product Overview | Recombinant Cattle IFNB1(Arg22~Asp186) fused with His tag at N-terminal was expressed in E. coli. |
| Species | Cattle |
| Source | E.coli |
| ProteinLength | Arg22~Asp186 |
| Description | IFNB1 played an important role in many functions. |
| Form | 20mM Tris, 150mM NaCl,pH8.0, containing 1mM EDTA, 1mM DTT, 0.01% SKL, 5% Trehalose and Proclin300. |
| Molecular Mass | 23.6kDa |
| Identity | Reconstitute in 20mM Tris, 150mM NaCl (pH8.0) to a concentration of 0.1-1.0 mg/mL. Do not vortex. |
| Endotoxin | <1.0EU per 1g (determined by the LAL method) |
| Purity | > 95% |
| Applications | Positive Control; Immunogen; SDS-PAGE; WB. If bio-activity of the protein is needed, please check active protein |

 Tel: 1-631-559-9269 1-516-512-3133

 Email: info@creative-biomart.com  Fax: 1-631-938-8127

 45-1 Ramsey Road, Shirley, NY 11967, USA

Stability The thermal stability is described by the loss rate. The loss rate was determined by accelerated thermal degradation test, that is, incubate the protein at 37 centigrade for 48h, and no obvious degradation and precipitation were observed. The loss rate is less than 5% within the expiration date under appropriate storage condition.

Storage Avoid repeated freeze/thaw cycles. Store at 2-8 centigrade for one month. Aliquot and store at -80 centigrade for 12 months.

Reconstitution Reconstitute in PBS or others

GENE INFORMATION

Gene Name IFNB1 interferon, beta 1, fibroblast [*Bos taurus*]

Official Symbol IFNB1

Synonyms IFNb; interferon beta

Gene ID 281845

mRNA Refseq NM_174350

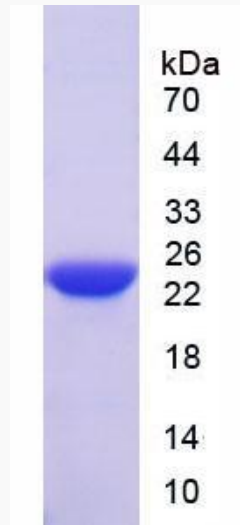
Protein Refseq NP_776775

UniProt ID P01578

 Tel: 1-631-559-9269 1-516-512-3133

 Email: info@creative-biomart.com  Fax: 1-631-938-8127

 45-1 Ramsey Road, Shirley, NY 11967, USA



 Tel: 1-631-559-9269 1-516-512-3133

 Email: info@creative-biomart.com  Fax: 1-631-938-8127

 45-1 Ramsey Road, Shirley, NY 11967, USA