

## Recombinant Human IFNB1 protein(22-187aa)

Cat. No. IFNB1-4221H Lot. No. (See product label)

### SPECIFICATION

<b>Product Overview</b>	Recombinant Human IFNB1 protein(P01574)(22-187aa) was expressed in E. coli.
<b>Species</b>	Human
<b>Source</b>	E.coli
<b>ProteinLength</b>	22-187aa
<b>Form</b>	If the delivery form is liquid, the default storage buffer is Tris/PBS-based buffer, 5%-50% glycerol. If the delivery form is lyophilized powder, the buffer before lyophilization is Tris/PBS-based buffer, 6% Trehalose, pH 8.0.
<b>Molecular Mass</b>	20.2 kDa
<b>Purity</b>	Greater than 90% as determined by SDS-PAGE.
<b>Storage</b>	Store at -20°C/-80°C upon receipt, aliquoting is necessary for mutiple use. Avoid repeated freeze-thaw cycles.
<b>Reconstitution</b>	We recommend that this vial be briefly centrifuged prior to opening to bring the contents to the bottom. Please reconstitute protein in deionized sterile water to a concentration of 0.1-1.0 mg/mL. We recommend to add 5-50% of glycerol (final concentration) and aliquot for long-term storage at -20°C/-80°C.
<b>AA Sequence</b>	MSYNLLGFLQRSSNFQCQKLLWQLNGRLEYCLKDRMNFDIPEEIKQLQQFQKEDAA

 Tel: 1-631-559-9269 1-516-512-3133

 Email: [info@creative-biomart.com](mailto:info@creative-biomart.com)  Fax: 1-631-938-8127

 45-1 Ramsey Road, Shirley, NY 11967, USA

LTIYEMLQNI FAIFRQDSSSTGWN ETIVENLLANVYHQINHLKTVLEEKLEKEDFTRGK  
LMSSLHLKRY YGRILHYLKAKEYSHCAWTIVRVEILRN FYFINRLTG YLRN

## GENE INFORMATION

**Gene Name** IFNB1 interferon, beta 1, fibroblast [ Homo sapiens ]

**Official Symbol** IFNB1

**Synonyms** IFNB1; interferon, beta 1, fibroblast; IFNB; interferon beta; IFB; IFF; IFN-beta; fibroblast interferon; MGC96956;

**Gene ID** 3456

**mRNA Refseq** NM\_002176

**Protein Refseq** NP\_002167

**MIM** 147640

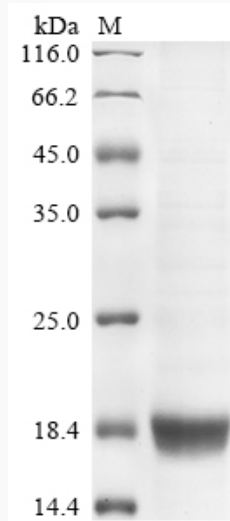
**UniProt ID** P01574

 Tel: 1-631-559-9269 1-516-512-3133

 Email: [info@creative-biomart.com](mailto:info@creative-biomart.com)  Fax: 1-631-938-8127

 45-1 Ramsey Road, Shirley, NY 11967, USA

**SDS-PAGE**



 Tel: 1-631-559-9269 1-516-512-3133

 Email: [info@creative-biomart.com](mailto:info@creative-biomart.com)  Fax: 1-631-938-8127

 45-1 Ramsey Road, Shirley, NY 11967, USA