

Active Recombinant Swine Interferon Beta

Cat. No. IFNB1-66S **Lot. No.** (See product label)

SPECIFICATION

| | |
|--|--|
| Product Overview | Recombinant Swine IFN beta was expressed in Yeast.MW= 19.5 kDa (164 aa). |
| Species | Pig |
| Source | Yeast |
| Description | Interferon beta is a protein that in humans is encoded by the IFNB1 gene. |
| Formulation/ Reconstitution | Lyophilized. Reconstitute with sterile phosphate-buffered saline containing at least 0.1% carrier protein. |
| Purification | Ion-exchange chromatography. |
| Purity | >95% as visualized by SDS-PAGE analysis. |
| Amino Acid Sequence | SYDVLRYQQR SSNLACQKLL GQLPGTPQYC LEDRMNFEVP EEIMQPPQFQ KEDAVLIHE MLQQIFGILR RNFSSTGWNE TVIKTILVEL DGQMDDLETI LEEIMEEENF PRGDMTILHL KKYLSILQY LKSKEYRSCA WTVVQVEILR NFSFLNRLTD YLRN. |
| Bioactivity | The biological activity of recombinant swine IFN beta was determined using MDBK cells in a cat-reporter assay. Bioactivity was detected at doses as low as 10 ng/mL.. |
| Stability And Storage | Stable for up to twelve months from date of receipt at -20°C. Stable for at least 3 months when stored in working aliquots with a carrier protein at -20°C. Avoid |

 Tel: 1-631-559-9269 1-516-512-3133

 Email: info@creative-biomart.com  Fax: 1-631-938-8127

 45-1 Ramsey Road, Shirley, NY 11967, USA

repeated freeze/thaw cycles.

GENE INFORMATION

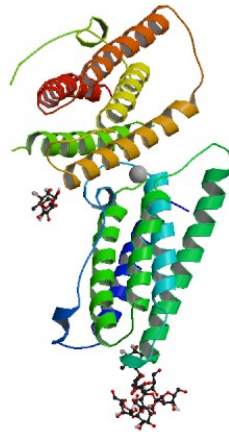
| | |
|----------------------------|---|
| Gene Name | IFNB1 interferon beta [<i>Sus scrofa</i>] |
| Synonyms | interferon beta; IFNB1; IFNb; IFN-beta; interferon-beta |
| Gene ID | 445459 |
| mRNA Refseq | NM_001003923.1 |
| Protein Refseq | NP_001003923.1 |
| Chromosome Location | 1q23-q27 |
| Pathway | Cytokine-cytokine receptor interaction; Cytosolic DNA-sensing pathway; Jak-STAT signaling pathway; Natural killer cell mediated cytotoxicity; RIG-I-like receptor signaling pathway; Toll-like receptor signaling pathway |

 Tel: 1-631-559-9269 1-516-512-3133

 Email: info@creative-biomart.com  Fax: 1-631-938-8127

 45-1 Ramsey Road, Shirley, NY 11967, USA

PDB rendering based
on 1au1.



 Tel: 1-631-559-9269 1-516-512-3133

 Email: info@creative-biomart.com  Fax: 1-631-938-8127

 45-1 Ramsey Road, Shirley, NY 11967, USA