

Recombinant Mouse IFNE Protein (22-192 aa), His-SUMO-tagged

Cat. No. IFNE-1057M **Lot. No.** (See product label)

SPECIFICATION

Product Overview	Recombinant Mouse IFNE Protein (22-192 aa) is produced by E. coli expression system. This protein is fused with a 6xHis-SUMO tag at the N-terminal. Protein Description: Full Length of Mature Protein.
Species	Mouse
Source	E.coli
ProteinLength	22-192 aa
Description	Type I interferon required for maintaining basal levels of IFN-regulated genes, including 2'-5'-oligoadenylate synthetase, IRF7 and ISG15, in the male reproductive tract. Directly mediates protection against viral, including HSV-2, and bacterial, including Chlamydia muridarum, genital infections.
Form	Tris-based buffer, 50% glycerol
Molecular Mass	36.0 kDa
AA Sequence	LEPKRIPFQLWMNRESLQLLKPLPSSSVQQCLAHRKNFLLPQQPVSPHQYQEGQVL AVVHEILQQIFTLLQTHGTMGIWEENHIEKVLAAALHRQLEYVESLGGLNAAQKSGGS SAQNLRLQIKAYFRRIHLDYLENQRYSSCAWIIVQTEIHRMFFVFRFTTWLSRQDPDP
Purity	> 90% as determined by SDS-PAGE.

 Tel: 1-631-559-9269 1-516-512-3133

 Email: info@creative-biomart.com  Fax: 1-631-938-8127

 45-1 Ramsey Road, Shirley, NY 11967, USA

Notes	Repeated freezing and thawing is not recommended. Store working aliquots at 4 centigrade for up to one week.
Storage	The shelf life is related to many factors, storage state, buffer ingredients, storage temperature and the stability of the protein itself. Generally, the shelf life of liquid form is 6 months at -20 centigrade/-80 centigrade. The shelf life of lyophilized form is 12 months at -20 centigrade/-80 centigrade.
Concentration	A hardcopy of COA with concentration instruction is sent along with the products.

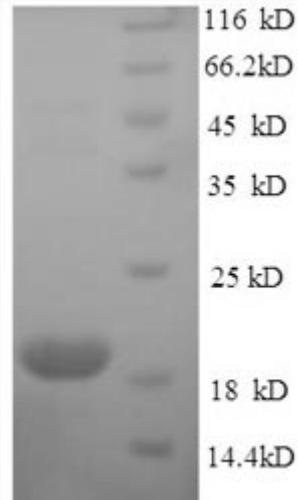
GENE INFORMATION

Gene Name	Ifne interferon epsilon [Mus musculus]
Official Symbol	IFNE
Synonyms	IFNE; IFN-epsilon; Ifne1; Ifnt1; Infe1; Ifn-tau-1; RP23-400P11.1; MGC129462; MGC129463;
Gene ID	230405
mRNA Refseq	NM_177348
Protein Refseq	NP_796322
UniProt ID	Q80ZF2

 Tel: 1-631-559-9269 1-516-512-3133

 Email: info@creative-biomart.com  Fax: 1-631-938-8127

 45-1 Ramsey Road, Shirley, NY 11967, USA



(Tris-Glycine gel) Discontinuous SDS-PAGE (reduced) with 5% enrichment gel and 15% separation gel.

 Tel: 1-631-559-9269 1-516-512-3133

 Email: info@creative-biomart.com  Fax: 1-631-938-8127

 45-1 Ramsey Road, Shirley, NY 11967, USA