

## Recombinant Horse IFNE Protein, His-tagged

Cat. No. IFNE-2272H Lot. No. (See product label)

### SPECIFICATION

<b>Product Overview</b>	Recombinant Horse IFNE Protein (Met1-Pro193) with a N-His tag was expressed in E. coli.
<b>Species</b>	Horse
<b>Source</b>	E.coli
<b>ProteinLength</b>	Met1-Pro193
<b>Description</b>	Predicted to enable cytokine activity and type I interferon receptor binding activity. Predicted to be involved in several processes, including B cell activation; defense response to other organism; and lymphocyte activation involved in immune response. Predicted to be active in extracellular space.
<b>Form</b>	Freeze-dried powder
<b>Molecular Mass</b>	Predicted Molecular Mass: 26.6 kDa Accurate Molecular Mass: 27 kDa
<b>Endotoxin</b>	<1.0 EU per 1g (determined by the LAL method).
<b>Purity</b>	> 95%
<b>Applications</b>	Positive Control; Immunogen; SDS-PAGE; WB.

 Tel: 1-631-559-9269 1-516-512-3133

 Email: [info@creative-biomart.com](mailto:info@creative-biomart.com)  Fax: 1-631-938-8127

 45-1 Ramsey Road, Shirley, NY 11967, USA

<b>Stability</b>	The thermal stability is described by the loss rate. The loss rate was determined by accelerated thermal degradation test, that is, incubate the protein at 37 centigrade for 48h, and no obvious degradation and precipitation were observed. The loss rate is less than 5% within the expiration date under appropriate storage condition.
<b>Storage</b>	Avoid repeated freeze/thaw cycles. Store at 2-8 centigrade for one month. Aliquot and store at -80 centigrade for 12 months.
<b>Storage Buffer</b>	PBS, pH7.4, containing 0.01% SKL, 1mM DTT, 5% Trehalose and Proclin300.
<b>Reconstitution</b>	Reconstitute in 20mM Tris, 150mM NaCl (pH8.0) to a concentration of 0.1-1.0 mg/mL. Do not vortex.

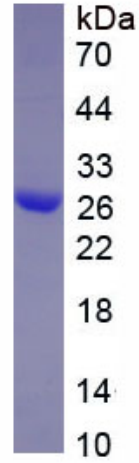
## GENE INFORMATION

<b>Gene Name</b>	IFNE interferon epsilon [ <i>Equus caballus</i> (horse) ]
<b>Official Symbol</b>	IFNE
<b>Synonyms</b>	IFNE; interferon epsilon; interferon epsilon
<b>Gene ID</b>	100065067
<b>mRNA Refseq</b>	XM_005605033
<b>Protein Refseq</b>	XP_005605090
<b>UniProt ID</b>	F6Z7A7

 Tel: 1-631-559-9269 1-516-512-3133

 Email: [info@creative-biomart.com](mailto:info@creative-biomart.com)  Fax: 1-631-938-8127

 45-1 Ramsey Road, Shirley, NY 11967, USA



 Tel: 1-631-559-9269 1-516-512-3133

 Email: [info@creative-biomart.com](mailto:info@creative-biomart.com)  Fax: 1-631-938-8127

 45-1 Ramsey Road, Shirley, NY 11967, USA