

Recombinant Human IFNE Protein (Gln30-Arg208), N-His tagged

Cat. No. IFNE-3697H Lot. No. (See product label)

SPECIFICATION

Product Overview	Recombinant human IFNE (Gln30-Arg208) protein fused with the N-His tag was expressed in E. coli.
Species	Human
Source	E.coli
ProteinLength	Gln30-Arg208
Description	Predicted to enable cytokine activity and type I interferon receptor binding activity. Predicted to be involved in several processes, including B cell activation; defense response to other organism; and lymphocyte activation involved in immune response. Predicted to be active in extracellular space.
Molecular Mass	23.45 kDa
Purity	>90 % as determined by SDS-PAGE.
Notes	For research use only.
Storage	Use a manual defrost freezer and avoid repeated freeze thaw cycles. Store at 2 to 8 centigrade for one week. Store at -20 to -80 centigrade for twelve months from the date of receipt.

 Tel: 1-631-559-9269 1-516-512-3133

 Email: info@creative-biomart.com  Fax: 1-631-938-8127

 45-1 Ramsey Road, Shirley, NY 11967, USA

Storage Buffer	0.01M PBS, pH 7.4, 0.02 % NLS
Reconstitution	Reconstitute in sterile water for a stock solution.
Shipping	In general, proteins are provided as lyophilized powder/frozen liquid. They are shipped out with dry ice/blue ice unless customers require otherwise.

GENE INFORMATION

Gene Name	IFNE interferon, epsilon [Homo sapiens (human)]
Official Symbol	IFNE
Synonyms	IFNE; interferon, epsilon; interferon epsilon; IFNE1; IFN-epsilon; interferon tau-1; interferon-epsilon; interferon epsilon 1; interferon epsilon-1; IFN-E; IFNT1; PRO655; MGC119018; MGC119020;
Gene ID	338376
mRNA Refseq	NM_176891
Protein Refseq	NP_795372
MIM	615223
UniProt ID	Q86WN2

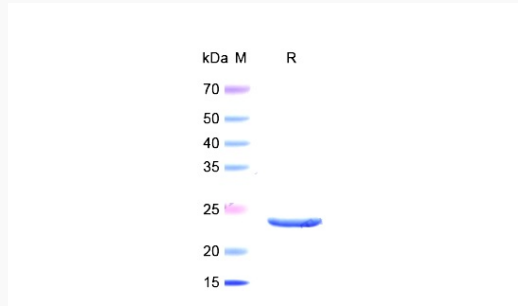
 Tel: 1-631-559-9269 1-516-512-3133

 Email: info@creative-biomart.com  Fax: 1-631-938-8127

 45-1 Ramsey Road, Shirley, NY 11967, USA



SDS-PAGE



Tel: 1-631-559-9269 1-516-512-3133

Email: info@creative-biomart.com Fax: 1-631-938-8127

45-1 Ramsey Road, Shirley, NY 11967, USA