

Recombinant Equine Interferon, Gamma

Cat. No. IFNG-64E Lot. No. (See product label)

SPECIFICATION

Product Overview	Recombinant Equine IFN- γ was expressed in Yeast. MW= 17.1 kDa (146 aa).
Species	Equine
Source	Yeast
Description	Interferon-gamma (IFN- γ) is a dimerized soluble cytokine that is the only member of the type II class of interferons. This interferon was originally called macrophage-activating factor, a term now used to describe a larger family of proteins to which IFN- γ belongs. In humans, the IFN- γ protein is encoded by the IFNG gene.
Formulation/ Reconstitution	Lyophilized. Reconstitute with sterile phosphate-buffered saline containing at least 0.1% carrier protein.
Purification	Ion-exchange chromatography.
Purity	>95% as visualized by SDS-PAGE analysis.
Amino Acid Sequence	YYCQAFFKE IENLKEYFNA SNPDVGDGGP LFLDILKNWK ESDSKKIIQS QIVSFYFKLF ENLKDQVIQ KSMPTIKEDL FAKFFNSSTS KLEDFQKLIQ IPVNDLKVQR KAISELIKVM NDLSPKANLR KRKRSQNPFR GRRALQ.
Bioactivity	In testing.
Stability And Storage	Stable for up to twelve months from date of receipt at -20°C. Stable for at least 3

 Tel: 1-631-559-9269 1-516-512-3133

 Email: info@creative-biomart.com  Fax: 1-631-938-8127

 45-1 Ramsey Road, Shirley, NY 11967, USA

months when stored in working aliquots with a carrier protein at -20°C. Avoid repeated freeze/thaw cycles.

GENE INFORMATION

Gene Name IFNG interferon, gamma [*Equus caballus*]

Synonyms interferon, gamma; IFNG;IFN-gamma

Gene ID 100034181

mRNA Refseq NM_001081949.1

Protein Refseq NP_001075418.1

UniProt ID P42160

Chromosome Location 6

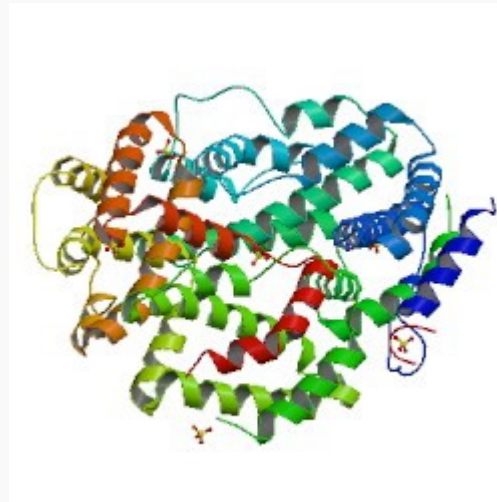
Pathway Allograft rejection; Cytokine-cytokine receptor interaction; Graft-versus-host disease; Jak-STAT signaling pathway; Natural killer cell mediated cytotoxicity; Proteasome; Regulation of autophagy; Systemic lupus erythematosus; T cell receptor signaling pathway; TGF-beta signaling pathway; Type I diabetes mellitus

 Tel: 1-631-559-9269 1-516-512-3133

 Email: info@creative-biomart.com  Fax: 1-631-938-8127

 45-1 Ramsey Road, Shirley, NY 11967, USA

Line representation
of the
crystallographic
structure of
interferon gamma.



 Tel: 1-631-559-9269 1-516-512-3133

 Email: info@creative-biomart.com  Fax: 1-631-938-8127

 45-1 Ramsey Road, Shirley, NY 11967, USA