

## Recombinant Horse IFNG Protein, His-tagged

Cat. No. IFNG-981H Lot. No. (See product label)

### SPECIFICATION

<b>Product Overview</b>	Recombinant Horse IFNG Protein (Ala25-Gln166) with His tag was expressed in E. coli.
<b>Species</b>	Horse
<b>Source</b>	E.coli
<b>ProteinLength</b>	Ala25-Gln166
<b>Description</b>	This gene encodes a soluble cytokine that is a member of the type II interferon class. The encoded protein is secreted by cells of both the innate and adaptive immune systems. The active protein is a homodimer that binds to the interferon gamma receptor which triggers a cellular response to viral and microbial infections. Mutations in this gene are associated with an increased susceptibility to viral, bacterial and parasitic infections and to several autoimmune diseases.
<b>Form</b>	Freeze-dried powder
<b>Molecular Mass</b>	Predicted Molecular Mass: 20.4 kDa
<b>Purity</b>	> 95%
<b>Applications</b>	Positive Control; Immunogen; SDS-PAGE; WB.
<b>Stability</b>	The thermal stability is described by the loss rate. The loss rate was determined by

 Tel: 1-631-559-9269 1-516-512-3133

 Email: [info@creative-biomart.com](mailto:info@creative-biomart.com)  Fax: 1-631-938-8127

 45-1 Ramsey Road, Shirley, NY 11967, USA

accelerated thermal degradation test, that is, incubate the protein at 37 centigrade for 48h, and no obvious degradation and precipitation were observed. The loss rate is less than 5% within the expiration date under appropriate storage condition.

**Storage**

Avoid repeated freeze/thaw cycles. Store at 2-8 centigrade for one month. Aliquot and store at -80 centigrade for 12 months.

**Storage Buffer**

PBS, pH7.4, containing 0.01% SKL, 1mM DTT, 5% Trehalose and Proclin300.

**Reconstitution**

Reconstitute in PBS or others.

## GENE INFORMATION

**Gene Name**

IFNG interferon, gamma [ *Equus caballus* (horse) ]

**Official Symbol**

IFNG

**Synonyms**

IFNG; interferon, gamma; interferon gamma; IFN-gamma;

**Gene ID**

100034181

**mRNA Refseq**

NM\_001081949

**Protein Refseq**

NP\_001075418

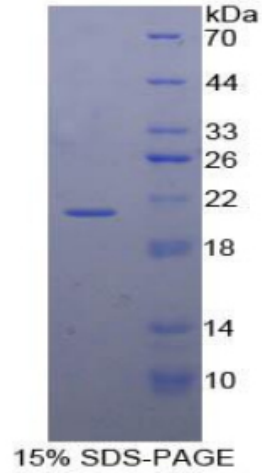
**UniProt ID**

P42160

 Tel: 1-631-559-9269 1-516-512-3133

 Email: [info@creative-biomart.com](mailto:info@creative-biomart.com)  Fax: 1-631-938-8127

 45-1 Ramsey Road, Shirley, NY 11967, USA



Tel: 1-631-559-9269 1-516-512-3133

Email: [info@creative-biomart.com](mailto:info@creative-biomart.com) Fax: 1-631-938-8127

45-1 Ramsey Road, Shirley, NY 11967, USA