

## Recombinant Human IFNGR1 protein, hFc-tagged

Cat. No. IFNGR1-7856H Lot. No. (See product label)

### SPECIFICATION

<b>Product Overview</b>	Recombinant Human IFNGR1 protein(AAH05333)(Glu18-Gly245), fused with C-terminal hFc tag, was expressed in HEK293.
<b>Species</b>	Human
<b>Source</b>	HEK293
<b>ProteinLength</b>	Glu18-Gly245
<b>Tag</b>	C-hFc
<b>Form</b>	Lyophilized from 0.22µm filtered solution in PBS (pH 7.4). Normally 8% trehalose is added as protectant before lyophilization.
<b>Bio-activity</b>	Immobilized Human IFN gamma, His Tag at 5µg/ml (100µl/well) on the plate. Dose response curve for Human IFN gamma R1, hFc Tag with the EC50 of 4.6ng/ml determined by ELISA.
<b>Molecular Mass</b>	The protein has a predicted MW of 52.4 kDa. Due to glycosylation, the protein migrates to 60-75 kDa based on Tris-Bis PAGE result.
<b>Endotoxin</b>	Less than 1EU per µg by the LAL method.
<b>Purity</b>	> 95% as determined by Tris-Bis PAGE; > 95% as determined by HPLC

 Tel: 1-631-559-9269 1-516-512-3133

 Email: [info@creative-biomart.com](mailto:info@creative-biomart.com)  Fax: 1-631-938-8127

 45-1 Ramsey Road, Shirley, NY 11967, USA

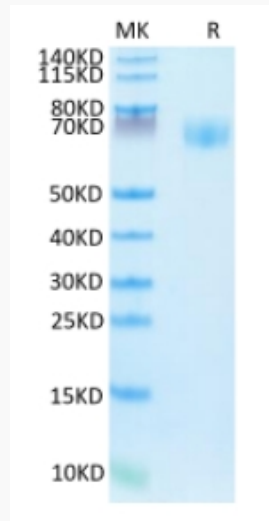
<b>Storage</b>	Reconstituted protein stable at -80°C for 12 months, 4°C for 1 week. Use a manual defrost freezer and avoid repeated freeze-thaw cycles.
<b>Reconstitution</b>	Centrifuge tubes before opening. Reconstituting to a concentration more than 100 µg/ml is recommended. Dissolve the lyophilized protein in distilled water.
<b>GENE INFORMATION</b>	
<b>Gene Name</b>	IFNGR1 interferon gamma receptor 1 [ Homo sapiens ]
<b>Official Symbol</b>	IFNGR1
<b>Synonyms</b>	IFNGR1; interferon gamma receptor 1; IFNGR; CD119; CDw119; AVP, type 2; IFN-gamma-R1; CD119 antigen; IFN-gamma receptor 1; antiviral protein, type 2; immune interferon receptor 1; interferon-gamma receptor alpha chain; FLJ45734;
<b>Gene ID</b>	3459
<b>mRNA Refseq</b>	NM_000416
<b>Protein Refseq</b>	NP_000407
<b>MIM</b>	107470
<b>UniProt ID</b>	P15260

 Tel: 1-631-559-9269 1-516-512-3133

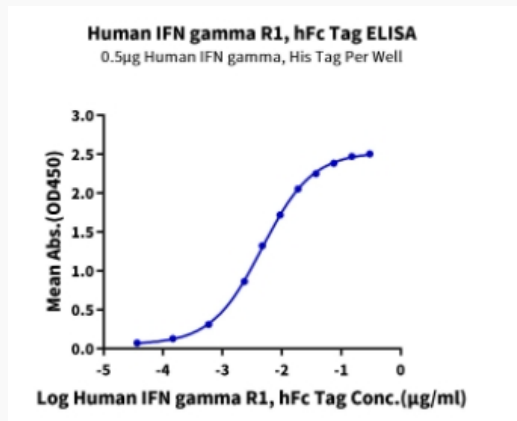
 Email: [info@creative-biomart.com](mailto:info@creative-biomart.com)  Fax: 1-631-938-8127

 45-1 Ramsey Road, Shirley, NY 11967, USA

**Tris-Bis PAGE**



**ELISA Data**



 Tel: 1-631-559-9269 1-516-512-3133

 Email: [info@creative-biomart.com](mailto:info@creative-biomart.com)  Fax: 1-631-938-8127

 45-1 Ramsey Road, Shirley, NY 11967, USA