

# Recombinant Full Length Human IFNGR2 Protein, C-Flag-tagged

**Cat. No.** IFNGR2-1609HFL    **Lot. No.** (See product label)

## SPECIFICATION

<b>Product Overview</b>	Recombinant Full Length Human IFNGR2 Protein, fused to Flag-tag at C-terminus, was expressed in Mammalian cells.
<b>Species</b>	Human
<b>Source</b>	Mammalian Cells
<b>ProteinLength</b>	1-337 aa
<b>Description</b>	This gene (IFNGR2) encodes the non-ligand-binding beta chain of the gamma interferon receptor. Human interferon-gamma receptor is a heterodimer of IFNGR1 and IFNGR2. Defects in IFNGR2 are a cause of mendelian susceptibility to mycobacterial disease (MSMD), also known as familial disseminated atypical mycobacterial infection. MSMD is a genetically heterogeneous disease with autosomal recessive, autosomal dominant or X-linked inheritance.
<b>Form</b>	25 mM Tris HCl, pH 7.3, 100 mM glycine, 10% glycerol.
<b>Molecular Mass</b>	35 kDa
<b>AA Sequence</b>	MRPTLLWSLLLLLGVFAAAAAAPPDPLSQLPAPQHPKIRLYNAEQVLSWEPVALSNS TRPVVYQVQFKYT DSKWFTADIMSIGVNCTQITATECDFTAASPSAGFPMDFNVTLR LRAELGALHSAWVTMPWFQHYRNVTV GPPENIEVTPGEGSLIIRFSSPFDIADTSTA FFCYVHYWEKGGIQVKGPFRRSNSISLDNLKPSRVYCL QVQAQLLWNKSNIFRVG

 Tel: 1-631-559-9269    1-516-512-3133

 Email: [info@creative-biomart.com](mailto:info@creative-biomart.com)     Fax: 1-631-938-8127

 45-1 Ramsey Road, Shirley, NY 11967, USA

HLSNISCYETMADASTELQQVILISVGTFSLLSVLAGACFFLVLYRGLIKYW  
 FHPPSIPLQIEEYLKDPTQPILEALDKDSSPKDDVWDSVSIISFPEKEQEDVLQTLTR  
 TRPLEQKLISEEDLAANDILDYKDDDDKV

**Purity** > 80% as determined by SDS-PAGE and Coomassie blue staining.

**Stability** Stable for 12 months from the date of receipt of the product under proper storage and handling conditions. Avoid repeated freeze-thaw cycles.

**Storage** Store at -80 centigrade.

**Concentration** >50 ug/mL as determined by microplate BCA method.

**Preparation** Recombinant protein was captured through anti-DDK affinity column followed by conventional chromatography steps.

**Protein Families** Druggable Genome, Transmembrane

**Protein Pathways** Cytokine-cytokine receptor interaction, Jak-STAT signaling pathway, Natural killer cell mediated cytotoxicity

**Full Length** Full L.

## GENE INFORMATION

**Gene Name** IFNGR2 interferon gamma receptor 2 [ Homo sapiens (human) ]

**Official Symbol** IFNGR2

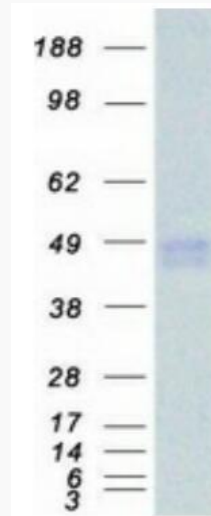
**Synonyms** AF-1; IFGR2; IMD28; IFNGT1

 Tel: 1-631-559-9269 1-516-512-3133

 Email: [info@creative-biomart.com](mailto:info@creative-biomart.com)  Fax: 1-631-938-8127

 45-1 Ramsey Road, Shirley, NY 11967, USA

<b>Gene ID</b>	3460
<b>mRNA Refseq</b>	NM_005534.4
<b>Protein Refseq</b>	NP_005525.2
<b>MIM</b>	147569
<b>UniProt ID</b>	P38484



Coomassie blue staining of purified IFNGR2 protein.

 Tel: 1-631-559-9269 1-516-512-3133

 Email: [info@creative-biomart.com](mailto:info@creative-biomart.com)  Fax: 1-631-938-8127

 45-1 Ramsey Road, Shirley, NY 11967, USA