

# Recombinant Active Human IFNL1 Protein, His-tagged(C-ter)

Cat. No. IFNL1-120H Lot. No. (See product label)

## SPECIFICATION

<b>Product Overview</b>	Recombinant Active Human IFNL1 Protein with His tag (C-ter) was expressed in E. coli.
<b>Species</b>	Human
<b>Source</b>	E.coli
<b>Description</b>	This gene encodes a cytokine distantly related to type I interferons and the IL-10 family. This gene, interleukin 28A (IL28A), and interleukin 28B (IL28B) are three closely related cytokine genes that form a cytokine gene cluster on a chromosomal region mapped to 19q13. Expression of the cytokines encoded by the three genes can be induced by viral infection. All three cytokines have been shown to interact with a heterodimeric class II cytokine receptor that consists of interleukin 10 receptor, beta (IL10RB) and interleukin 28 receptor, alpha (IL28RA). [provided by RefSeq, Jul 2008]
<b>Form</b>	Powder
<b>Bio-activity</b>	Determined by its ability to induce IL-8 secretion in HuH7 cells. The ED50 for this effect is < 6 ng/mL.
<b>AA Sequence</b>	MPTSKPTTTGKGGCHIGRFKSLSPQELASFKKARDALEESLKLKNWSCSSPVFPGNW DLRLLQVRERPVALEAELALTLKVLEAAAGPALEDVLDQPLHTLHHILSQLQACIQPQ PTAGPRPRGRLHHWLHRLQEAPKKEASAGCLEASVTFNLFRLLTRDLKYVADGNLCL RTSTHPEST

 Tel: 1-631-559-9269 1-516-512-3133

 Email: [info@creative-biomart.com](mailto:info@creative-biomart.com)  Fax: 1-631-938-8127

 45-1 Ramsey Road, Shirley, NY 11967, USA

<b>Endotoxin</b>	Endotoxin level is less than 0.1 EU/μg of the protein, as determined by the LAL test.
<b>Purity</b>	> 98% (by SDS-PAGE)
<b>Applications</b>	SDS-PAGE
<b>Notes</b>	For laboratory research only, not for drug, diagnostic or other use.
<b>Storage</b>	Lyophilized protein should be stored at -20°C. After reconstitution, aliquot and store at -20°C or -80°C for up to one month. Storage in frost free freezers is not recommended. Avoid repeated freeze/thaw cycles. Suggest spin the vial prior to opening.
<b>Storage Buffer</b>	PBS (pH 8.0)
<b>Reconstitution</b>	It is recommended to reconstitute the lyophilized protein in sterile water to a concentration not less than 100 μg/mL and incubate the stock solution for at least 20 min at room temperature to make sure the protein is dissolved completely.

## GENE INFORMATION

<b>Gene Name</b>	IFNL1 interferon lambda 1 [ Homo sapiens (human) ]
<b>Official Symbol</b>	IFNL1
<b>Synonyms</b>	IFNL1; interferon lambda 1; IL29; IL-29; interferon lambda-1; IFN-lambda-1; cytokine Zcyto21; interleukin 29 (interferon, lambda 1); interleukin-29
<b>Gene ID</b>	282618
<b>mRNA Refseq</b>	NM_172140

 Tel: 1-631-559-9269 1-516-512-3133

 Email: [info@creative-biomart.com](mailto:info@creative-biomart.com)  Fax: 1-631-938-8127

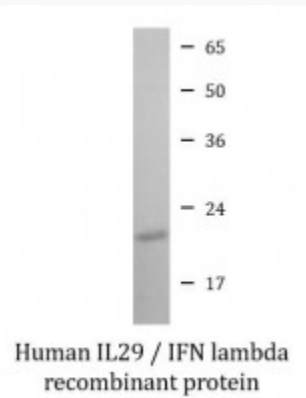
 45-1 Ramsey Road, Shirley, NY 11967, USA

**Protein Refseq** NP\_742152

**MIM** 607403

**UniProt ID** Q8IU54

**SDS-PAGE**



 Tel: 1-631-559-9269 1-516-512-3133

 Email: [info@creative-biomart.com](mailto:info@creative-biomart.com)  Fax: 1-631-938-8127

 45-1 Ramsey Road, Shirley, NY 11967, USA