

## Recombinant Human IFNL1 Protein (Met1-Thr200), C-His tagged

Cat. No. IFNL1-3816H Lot. No. (See product label)

### SPECIFICATION

<b>Product Overview</b>	Recombinant human IFNL1 (Met1-Thr200) fused with the C-terminal His tag was expressed in Mammalian cells.
<b>Species</b>	Human
<b>Source</b>	Mammalian Cells
<b>ProteinLength</b>	Met1-Thr200
<b>Description</b>	This gene encodes a cytokine distantly related to type I interferons and the IL-10 family. This gene, interleukin 28A (IL28A), and interleukin 28B (IL28B) are three closely related cytokine genes that form a cytokine gene cluster on a chromosomal region mapped to 19q13. Expression of the cytokines encoded by the three genes can be induced by viral infection. All three cytokines have been shown to interact with a heterodimeric class II cytokine receptor that consists of interleukin 10 receptor, beta (IL10RB) and interleukin 28 receptor, alpha (IL28RA) .
<b>Form</b>	Lyophilized powder/frozen liquid
<b>Molecular Mass</b>	22.11 kDa
<b>Endotoxin</b>	< 1.0 EU/μg of the protein as determined by the LAL method.
<b>Purity</b>	>90% as determined by SDS-PAGE.

 Tel: 1-631-559-9269 1-516-512-3133

 Email: [info@creative-biomart.com](mailto:info@creative-biomart.com)  Fax: 1-631-938-8127

 45-1 Ramsey Road, Shirley, NY 11967, USA

<b>Notes</b>	For research use only.
<b>Storage</b>	Use a manual defrost freezer and avoid repeated freeze thaw cycles. Store at 2 to 8 centigrade for one week. Store at -20 to -80 centigrade for twelve months from the date of receipt.
<b>Storage Buffer</b>	Supplied as solution form in PBS or lyophilized from PBS.
<b>Reconstitution</b>	Reconstitute in sterile water for a stock solution.
<b>Shipping</b>	They are shipped out with dry ice/blue ice unless customers require otherwise.

## GENE INFORMATION

<b>Gene Name</b>	IFNL1 interferon lambda 1 [ Homo sapiens (human) ]
<b>Official Symbol</b>	IFNL1
<b>Synonyms</b>	IFNL1; interferon lambda 1; IL29; IL-29; interferon lambda-1; IFN-lambda-1; cytokine Zcyto21; interleukin 29 (interferon, lambda 1); interleukin-29
<b>Gene ID</b>	282618
<b>mRNA Refseq</b>	NM_172140
<b>Protein Refseq</b>	NP_742152
<b>MIM</b>	607403
<b>UniProt ID</b>	Q8IU54

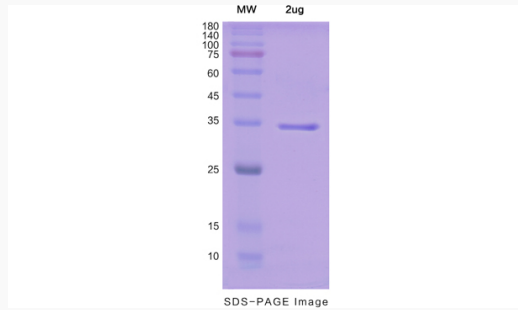
 Tel: 1-631-559-9269 1-516-512-3133

 Email: [info@creative-biomart.com](mailto:info@creative-biomart.com)  Fax: 1-631-938-8127

 45-1 Ramsey Road, Shirley, NY 11967, USA



SDS-PAGE



Tel: 1-631-559-9269 1-516-512-3133

Email: [info@creative-biomart.com](mailto:info@creative-biomart.com) Fax: 1-631-938-8127

45-1 Ramsey Road, Shirley, NY 11967, USA