

Recombinant Active Human IFNL3 Protein, His-tagged(C-ter)

Cat. No. IFNL3-123H Lot. No. (See product label)

SPECIFICATION

Product Overview	Recombinant Active Human IFNL3 Protein with His tag (C-ter) was expressed in E. coli.
Species	Human
Source	E.coli
ProteinLength	22-196 aa
Description	This gene encodes a cytokine distantly related to type I interferons and the IL-10 family. This gene, interleukin 28A (IL28A), and interleukin 29 (IL29) are three closely related cytokine genes that form a cytokine gene cluster on a chromosomal region mapped to 19q13. Expression of the cytokines encoded by the three genes can be induced by viral infection. All three cytokines have been shown to interact with a heterodimeric class II cytokine receptor that consists of interleukin 10 receptor, beta (IL10RB) and interleukin 28 receptor, alpha (IL28RA). [provided by RefSeq, Jul 2008]
Form	Powder
Bio-activity	Determined by its ability to protect HepG2 cells infected with encephalomyocarditis (EMC) virus. The ED50 for this effect is < 5 ng/mL.
AA Sequence	MVPVARLRGALPDARGCHIAQFKSLSPQELQAFKRAKDALEESLLLKDCKCRSRLFP RTWDLRQLQVRERPVALEAELALTLKVLEATADTDPALGDVLDQPLHTLHHILSQLR ACIQPQPTAGPRTRGRLHHLHRLQEAPKKESPGCLEASVTFNLFRLLTRDLNCVA

 Tel: 1-631-559-9269 1-516-512-3133

 Email: info@creative-biomart.com  Fax: 1-631-938-8127

 45-1 Ramsey Road, Shirley, NY 11967, USA

	SGDLCV
Endotoxin	Endotoxin level is less than 0.01 EU/μg of the protein, as determined by the LAL test.
Purity	> 95% (by SDS-PAGE)
Applications	SDS-PAGE
Notes	For laboratory research only, not for drug, diagnostic or other use.
Storage	Lyophilized protein should be stored at -20°C. After reconstitution, aliquot and store at -20°C or -80°C for up to one month. Storage in frost free freezers is not recommended. Avoid repeated freeze/thaw cycles. Suggest spin the vial prior to opening.
Storage Buffer	PBS (pH 8.0)
Reconstitution	It is recommended to reconstitute the lyophilized protein in sterile water to a concentration not less than 100 μg/mL and incubate the stock solution for at least 20 min at room temperature to make sure the protein is dissolved completely.
GENE INFORMATION	
Gene Name	IFNL3 interferon lambda 3 [Homo sapiens (human)]
Official Symbol	IFNL3
Synonyms	IFNL3; interferon lambda 3; IL28B; IL28C; IL-28B; IL-28C; IFN-lambda-3; IFN-lambda-4; interferon lambda-3; cytokine Zcyto22; interferon, lambda 4; interleukin-28B; interleukin-28C

 Tel: 1-631-559-9269 1-516-512-3133

 Email: info@creative-biomart.com  Fax: 1-631-938-8127

 45-1 Ramsey Road, Shirley, NY 11967, USA

Gene ID 282617

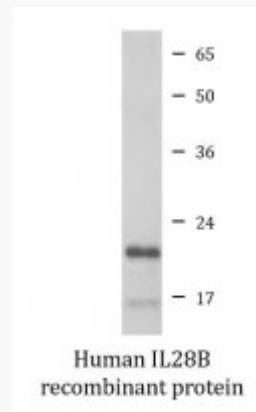
mRNA Refseq NM_172139

Protein Refseq NP_742151

MIM 607402

UniProt ID Q8IZI9

SDS-PAGE



 Tel: 1-631-559-9269 1-516-512-3133

 Email: info@creative-biomart.com  Fax: 1-631-938-8127

 45-1 Ramsey Road, Shirley, NY 11967, USA