

Recombinant Human IFNL3 Protein (Met1-Val196), C-His tagged

Cat. No. IFNL3-3815H **Lot. No.** (See product label)

SPECIFICATION

Product Overview	Recombinant human IFNL3 (Met1-Val196) fused with the C-terminal His tag was expressed in Mammalian cells.
Species	Human
Source	Mammalian Cells
ProteinLength	Met1-Val196
Description	This gene encodes a cytokine distantly related to type I interferons and the IL-10 family. This gene, interleukin 28A (IL28A), and interleukin 29 (IL29) are three closely related cytokine genes that form a cytokine gene cluster on a chromosomal region mapped to 19q13. Expression of the cytokines encoded by the three genes can be induced by viral infection. All three cytokines have been shown to interact with a heterodimeric class II cytokine receptor that consists of interleukin 10 receptor, beta (IL10RB) and interleukin 28 receptor, alpha (IL28RA) .
Form	Lyophilized powder/frozen liquid
Molecular Mass	21.67 kDa
Endotoxin	< 1.0 EU/μg of the protein as determined by the LAL method.
Purity	>90% as determined by SDS-PAGE.

 Tel: 1-631-559-9269 1-516-512-3133

 Email: info@creative-biomart.com  Fax: 1-631-938-8127

 45-1 Ramsey Road, Shirley, NY 11967, USA

Notes	For research use only.
Storage	Use a manual defrost freezer and avoid repeated freeze thaw cycles. Store at 2 to 8 centigrade for one week. Store at -20 to -80 centigrade for twelve months from the date of receipt.
Storage Buffer	Supplied as solution form in PBS or lyophilized from PBS.
Reconstitution	Reconstitute in sterile water for a stock solution.
Shipping	They are shipped out with dry ice/blue ice unless customers require otherwise.

GENE INFORMATION

Gene Name	IFNL3 interferon lambda 3 [Homo sapiens (human)]
Official Symbol	IFNL3
Synonyms	IFNL3; interferon lambda 3; IL28B; IL28C; IL-28B; IL-28C; IFN-lambda-3; IFN-lambda-4; interferon lambda-3; cytokine Zcyto22; interferon, lambda 4; interleukin-28B; interleukin-28C
Gene ID	282617
mRNA Refseq	NM_172139
Protein Refseq	NP_742151
MIM	607402
UniProt ID	Q8IZI9

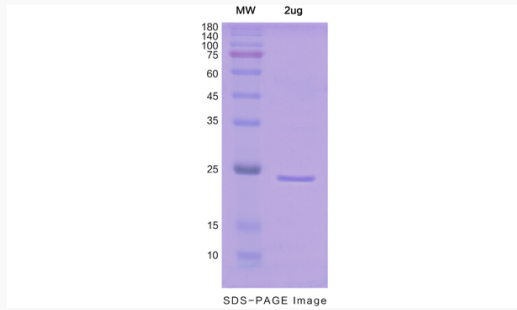
 Tel: 1-631-559-9269 1-516-512-3133

 Email: info@creative-biomart.com  Fax: 1-631-938-8127

 45-1 Ramsey Road, Shirley, NY 11967, USA



SDS-PAGE



Tel: 1-631-559-9269 1-516-512-3133

Email: info@creative-biomart.com Fax: 1-631-938-8127

45-1 Ramsey Road, Shirley, NY 11967, USA