

Recombinant Human IFNW1 Protein (Leu22-Ser195), C-His tagged

Cat. No. IFNW1-3103H Lot. No. (See product label)

SPECIFICATION

Product Overview	Recombinant human IFNW1 (Leu22-Ser195) protein fused with the C-terminal His tag was expressed in Mammalian cells.
Species	Human
Source	Mammalian Cells
ProteinLength	Leu22-Ser195
Molecular Mass	19.14 kDa
Purity	>90 % as determined by SDS-PAGE.
Notes	For research use only.
Storage	Use a manual defrost freezer and avoid repeated freeze thaw cycles. Store at 2 to 8 centigrade for one week. Store at -20 to -80 centigrade for twelve months from the date of receipt.
Storage Buffer	Supplied as solution form in PBS or lyophilized from PBS.
Reconstitution	Reconstitute in sterile water for a stock solution.
Shipping	In general, proteins are provided as lyophilized powder/frozen liquid. They are

 Tel: 1-631-559-9269 1-516-512-3133

 Email: info@creative-biomart.com  Fax: 1-631-938-8127

 45-1 Ramsey Road, Shirley, NY 11967, USA

shipped out with dry ice/blue ice unless customers require otherwise.

GENE INFORMATION

Gene Name	IFNW1 interferon, omega 1 [Homo sapiens (human)]
Official Symbol	IFNW1
Synonyms	IFNW1; interferon, omega 1; interferon omega-1; IFN omega 1; interferon omega 1; interferon alpha-II-1; IFN-omega 1, interferon omega-1;
Gene ID	3467
mRNA Refseq	NM_002177
Protein Refseq	NP_002168
MIM	147553
UniProt ID	P05000

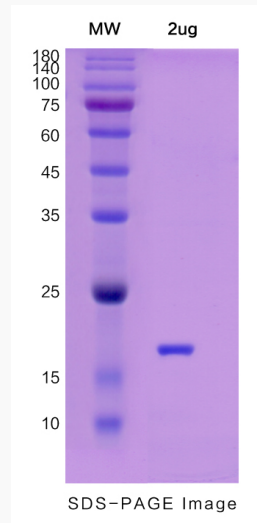
 Tel: 1-631-559-9269 1-516-512-3133

 Email: info@creative-biomart.com  Fax: 1-631-938-8127

 45-1 Ramsey Road, Shirley, NY 11967, USA



SDS-PAGE



Tel: 1-631-559-9269 1-516-512-3133

Email: info@creative-biomart.com Fax: 1-631-938-8127

45-1 Ramsey Road, Shirley, NY 11967, USA