

Recombinant Human IFRD2 Protein, Myc/DDK-tagged, C13 and N15-labeled

Cat. No. IFRD2-2267H **Lot. No.** (See product label)

SPECIFICATION

Product Overview

IFRD2 MS Standard C13 and N15-labeled recombinant protein (NP_006755) with a C-terminal MYC/DDK tag, was expressed in HEK293 cells.

Species

Human

Source

HEK293

Description

IFRD2 (Interferon Related Developmental Regulator 2) is a Protein Coding gene. Diseases associated with IFRD2 include Palmoplantar Keratoderma And Congenital Alopecia 2 and Cholecystolithiasis. Gene Ontology (GO) annotations related to this gene include binding. An important paralog of this gene is IFRD1.

Molecular Mass

48 kDa

AA Sequence

```
MPRARKGNTLRKGGQRRGGGARSSAQADSGSSDDEAASEARSTASECPSLLSTTA
EDSLGGDVVDEQGGQEDLEEKLKEYVDCLTDKSAKTRQGALESRLALASRLLPDF
LLERRLTLADALEKCLKKKGKGEEQALAAAVLGLLCVQLGPGPKGEELFHSLQPLLVS
VLS DSTASPAARLHCASALGLGCYVAAADIQDLV SCLACLESVFSRFYGLGGSSTSP
VVPASLHGLLSAALQAWALLLTICPSTQISHILDRQLPRLPQLLSSESVNLRIAAGETIA
LLFELARDLEEEFVYEDMEALCSVLRRTLATDSNKYRAKADRRRQRSTFRAVLH SVEG
GECEEEIVRFGFEVLYMDSWARHRIYAAFKEVLGSGMHHLQNNELLRDIFGLGPVL
LLDATAKACKVPRFEKHLYNAAAFKARTKARSVRDRK RADILTRTRPLEQKLISEED
LAANDILDYKDDDDKV
```

 Tel: 1-631-559-9269 1-516-512-3133

 Email: info@creative-biomart.com  Fax: 1-631-938-8127

 45-1 Ramsey Road, Shirley, NY 11967, USA

Purity	> 80% as determined by SDS-PAGE and Coomassie blue staining
Stability	Stable for 3 months from receipt of products under proper storage and handling conditions.
Storage	Store at -80 centigrade. Avoid repeated freeze-thaw cycles.
Concentration	50 µg/mL as determined by BCA
Storage Buffer	100 mM glycine, 25 mM Tris-HCl, pH 7.3.

GENE INFORMATION

Gene Name	IFRD2 interferon-related developmental regulator 2 [Homo sapiens (human)]
Official Symbol	IFRD2
Synonyms	IFRD2; interferon-related developmental regulator 2; IFNRP; interferon related protein; SKMc15; SM15; interferon-related protein; FLJ40446;
Gene ID	7866
mRNA Refseq	NM_006764
Protein Refseq	NP_006755
MIM	602725
UniProt ID	Q12894

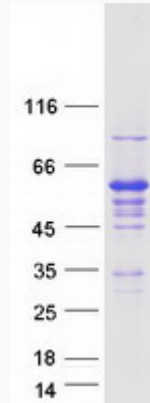
 Tel: 1-631-559-9269 1-516-512-3133

 Email: info@creative-biomart.com  Fax: 1-631-938-8127

 45-1 Ramsey Road, Shirley, NY 11967, USA



SDS-PAGE



Tel: 1-631-559-9269 1-516-512-3133

Email: info@creative-biomart.com Fax: 1-631-938-8127

45-1 Ramsey Road, Shirley, NY 11967, USA