

Recombinant Human IFT22 Protein, MYC/DDK-tagged, C13 and N15-labeled

Cat. No. IFT22-123H **Lot. No.** (See product label)

SPECIFICATION

Product Overview	RABL5 MS Standard C13 and N15-labeled recombinant protein (NP_073614) with a C-terminal MYC/DDK tag, was expressed in HEK293 cells.
Species	Human
Source	HEK293
Description	Small GTPase-like component of the intraflagellar transport (IFT) complex B.
Molecular Mass	20.8 kDa
AA Sequence	MLKAKILFVGPCESGKTVLANFLTESSDITEYSPTQGVRILEFENPHVTSNNKGTGCE FELWDCGGDAKFESCWPALMKDAHGVVIVFNADIPSHRKEMEMWYSCFVQQPSLQ DTQCMLIAHHKPGSGDDKGSLSLSPPLNKLKLVHSNLEDDPEEIRMEFIKYLKSIINS MSESRDREEMSIMTTRTRPLEQKLISEEDLAANDILDYKDDDDKV
Purity	> 80% as determined by SDS-PAGE and Coomassie blue staining
Stability	Stable for 3 months from receipt of products under proper storage and handling conditions.
Storage	Store at -80 centigrade. Avoid repeated freeze-thaw cycles.
Concentration	50 µg/mL as determined by BCA

 Tel: 1-631-559-9269 1-516-512-3133

 Email: info@creative-biomart.com  Fax: 1-631-938-8127

 45-1 Ramsey Road, Shirley, NY 11967, USA

Storage Buffer 100 mM glycine, 25 mM Tris-HCl, pH 7.3.

GENE INFORMATION

Gene Name IFT22 intraflagellar transport 22 [Homo sapiens (human)]

Official Symbol IFT22

Synonyms IFT22; intraflagellar transport 22; RABL5; intraflagellar transport protein 22 homolog; RAB, member RAS oncogene family-like 5; RAB, member of RAS oncogene family-like 5; intraflagellar transport 22 homolog; rab-like protein 5

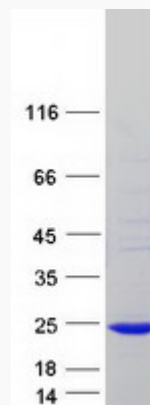
Gene ID 64792

mRNA Refseq NM_022777

Protein Refseq NP_073614

UniProt ID Q9H7X7

SDS-PAGE



 Tel: 1-631-559-9269 1-516-512-3133

 Email: info@creative-biomart.com  Fax: 1-631-938-8127

 45-1 Ramsey Road, Shirley, NY 11967, USA