

Recombinant Human IFT46 Protein, GST-tagged

Cat. No. IFT46-477H Lot. No. (See product label)

SPECIFICATION

Product Overview Human C11orf60 full-length ORF (AAH11647.1, 1 a.a. - 304 a.a.) recombinant protein with GST-tag at N-terminal.

Species Human

Source Wheat Germ

Form 50 mM Tris-HCl, 10 mM reduced Glutathione, pH=8.0 in the elution buffer.

Molecular Mass 60.7 kDa

AA Sequence
MADNSSDECEEEENKEKKKTSQLTPQRGFSENEDDDDDDDDSSSETDSDSDDDDDE
EHGAPLEGAYDPADYEHLPVSAEIKELFYISRYTPQLIDLHKLKPFIPDFIPAVGDID
AFLKVPRPDGKPDNLGLLVLDEPSTKQSDPTVLSLWLTENSKQHNTQHMKVKSLED
AEKNPKAIDTWIESISELHRSKPPATVHYTRPMPDIDTLMQEWSPEFEELLGKVSLEPT
AEIDCSLAEYIDMICAILDIPVYKSRIQSLHLLFSLYSEFKNSQHFKALAEKGKKAFT PSS
NSTSQAGDMETLTFS

Storage Store at -80 centigrade. Aliquot to avoid repeated freezing and thawing.

Storage Buffer 50 mM Tris-HCl, 10 mM reduced Glutathione, pH=8.0 in the elution buffer.

GENE INFORMATION

Gene Name IFT46 intraflagellar transport 46 homolog (Chlamydomonas) [Homo sapiens]

 Tel: 1-631-559-9269 1-516-512-3133

 Email: info@creative-biomart.com  Fax: 1-631-938-8127

 45-1 Ramsey Road, Shirley, NY 11967, USA

Official Symbol IFT46

Synonyms

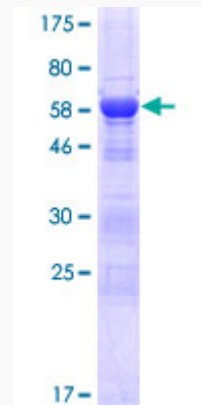
intraflagellar transport 46 homolog (Chlamydomonas); chromosome 11 open reading frame 60; C11orf2; UPF0360; C11orf60; intraflagellar transport protein 46 homolog; FLJ21827; intraflagellar transport protein IFT46

Gene ID 56912

mRNA Refseq NM_020153.3

Protein Refseq NP_064538.3

UniProt ID Q9NQC8



 Tel: 1-631-559-9269 1-516-512-3133

 Email: info@creative-biomart.com  Fax: 1-631-938-8127

 45-1 Ramsey Road, Shirley, NY 11967, USA