

## Recombinant Human IFT57 Protein, GST-tagged

**Cat. No.** IFT57-4018H    **Lot. No.** (See product label)

### SPECIFICATION

<b>Product Overview</b>	Human ESRRBL1 partial ORF ( NP_060480, 214 a.a. - 312 a.a.) recombinant protein with GST-tag at N-terminal.
<b>Species</b>	Human
<b>Source</b>	Wheat Germ
<b>Description</b>	IFT57 (Intraflagellar Transport 57) is a Protein Coding gene. Diseases associated with IFT57 include Huntington Disease and Bardet-Biedl Syndrome. Among its related pathways are fMLP Pathway and Respiratory electron transport, ATP synthesis by chemiosmotic coupling, and heat production by uncoupling proteins.
<b>Molecular Mass</b>	36.63 kDa
<b>AA Sequence</b>	QTYHLDMNETAKQEDILESTTDAAEWSLEVERVLPQLKVTIRTDNKDWRIHVDDQMH QHRSGIESALKETKGFLLDKLHNEITRTLEKISSREKYINNQLE
<b>Applications</b>	Enzyme-linked Immunoabsorbent Assay Western Blot (Recombinant protein) Antibody Production Protein Array
<b>Notes</b>	Best use within three months from the date of receipt of this protein.
<b>Storage</b>	Store at -80 centigrade. Aliquot to avoid repeated freezing and thawing.

 Tel: 1-631-559-9269    1-516-512-3133

 Email: [info@creative-biomart.com](mailto:info@creative-biomart.com)     Fax: 1-631-938-8127

 45-1 Ramsey Road, Shirley, NY 11967, USA

**Storage Buffer** 50 mM Tris-HCl, 10 mM reduced Glutathione, pH=8.0 in the elution buffer.

## GENE INFORMATION

**Gene Name** IFT57 intraflagellar transport 57 homolog (Chlamydomonas) [ Homo sapiens ]

**Official Symbol** IFT57

**Synonyms** IFT57; intraflagellar transport 57 homolog (Chlamydomonas); ESRRL1, estrogen related receptor beta like 1; intraflagellar transport protein 57 homolog; FLJ10147; HIPPI; MHS4R2; HIP1 protein interactor; HIP1-interacting protein; dermal papilla-derived protein 8; estrogen-related receptor beta like 1; estrogen-related receptor beta-like protein 1; huntingtin interacting protein-1 interacting protein; ESRRL1;

**Gene ID** 55081

**mRNA Refseq** NM\_018010

**Protein Refseq** NP\_060480

**MIM** 606621

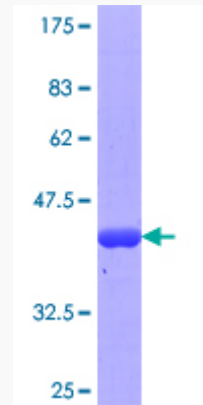
**UniProt ID** Q9NWB7

 Tel: 1-631-559-9269 1-516-512-3133

 Email: [info@creative-biomart.com](mailto:info@creative-biomart.com)  Fax: 1-631-938-8127

 45-1 Ramsey Road, Shirley, NY 11967, USA

**Quality Control  
Testing**



12.5% SDS-PAGE Stained with Coomassie Blue.

 Tel: 1-631-559-9269 1-516-512-3133

 Email: [info@creative-biomart.com](mailto:info@creative-biomart.com)  Fax: 1-631-938-8127

 45-1 Ramsey Road, Shirley, NY 11967, USA