

Recombinant Human IGDC4 Protein, GST-tagged

Cat. No. IGDC4-5988H Lot. No. (See product label)

SPECIFICATION

Product Overview	Human NOPE partial ORF (NP_066013, 1152 a.a. - 1250 a.a.) recombinant protein with GST-tag at N-terminal.
Species	Human
Source	Wheat Germ
Description	IGDC4 (Immunoglobulin Superfamily DCC Subclass Member 4) is a Protein Coding gene. An important paralog of this gene is PRTG.
Molecular Mass	36.63 kDa
AA Sequence	DLEPEDPLPPEAPDLISGVGDPGQGAAWLDRELGGCELAAPGPDRLTCLPEAASAS CSYPDLQPGEVLEETPGDSCQLKSPCPLGASPLRSPVSSSA
Applications	Enzyme-linked Immunoabsorbent Assay Western Blot (Recombinant protein) Antibody Production Protein Array
Notes	Best use within three months from the date of receipt of this protein.
Storage	Store at -80 centigrade. Aliquot to avoid repeated freezing and thawing.
Storage Buffer	50 mM Tris-HCl, 10 mM reduced Glutathione, pH=8.0 in the elution buffer.

 Tel: 1-631-559-9269 1-516-512-3133

 Email: info@creative-biomart.com  Fax: 1-631-938-8127

 45-1 Ramsey Road, Shirley, NY 11967, USA

GENE INFORMATION

Gene Name IGDCC4 immunoglobulin superfamily, DCC subclass, member 4 [Homo sapiens]

Official Symbol IGDCC4

Synonyms IGDCC4; immunoglobulin superfamily, DCC subclass, member 4; immunoglobulin superfamily DCC subclass member 4; likely ortholog of mouse neighbor of Punc E11; LOC57722; NOPE; hDDM36; neighbor of Punc E11; DDM36; FLJ42051; KIAA1628;

Gene ID 57722

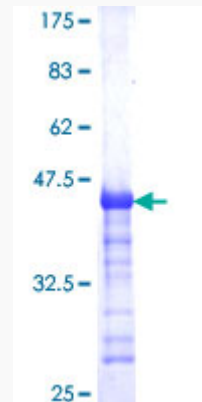
mRNA Refseq NM_020962

Protein Refseq NP_066013

UniProt ID Q8TDY8

Quality Control

Testing:



12.5% SDS-PAGE Stained with Coomassie Blue.

 Tel: 1-631-559-9269 1-516-512-3133

 Email: info@creative-biomart.com  Fax: 1-631-938-8127

 45-1 Ramsey Road, Shirley, NY 11967, USA