

Recombinant Human IGF1 Protein, MYC/DDK-tagged, C13 and N15-labeled

Cat. No. IGF1-020H **Lot. No.** (See product label)

SPECIFICATION

Product Overview	IGF1 MS Standard C13 and N15-labeled recombinant protein (NP_000609) with a C-terminal MYC/DDK tag, was expressed in HEK293 cells.
Species	Human
Source	HEK293
Description	The protein encoded by this gene is similar to insulin in function and structure and is a member of a family of proteins involved in mediating growth and development. The encoded protein is processed from a precursor, bound by a specific receptor, and secreted. Defects in this gene are a cause of insulin-like growth factor I deficiency. Alternative splicing results in multiple transcript variants encoding different isoforms that may undergo similar processing to generate mature protein.
Molecular Mass	17.03 kDa
AA Sequence	MGKISSLPTQLFKCCFCDFLKVKMHTMSSSHLFYLALCLLTFTSSATAGPETLCGAEL VDALQFVCGDRGFYFNKPTGYGSSRRAPQTGIVDECCFRSCDLRRLEMYCAPLKP AKSARSVRAQRHTDMPKTQKEVHLKNASRGSAGNKNYRMTRTRPLEQKLISEEDLA ANDILDYKDDDDKV
Purity	> 80% as determined by SDS-PAGE and Coomassie blue staining
Stability	Stable for 3 months from receipt of products under proper storage and handling

 Tel: 1-631-559-9269 1-516-512-3133

 Email: info@creative-biomart.com  Fax: 1-631-938-8127

 45-1 Ramsey Road, Shirley, NY 11967, USA

conditions.

Storage Store at -80 centigrade. Avoid repeated freeze-thaw cycles.

Concentration 50 µg/mL as determined by BCA

Storage Buffer 100 mM glycine, 25 mM Tris-HCl, pH 7.3.

GENE INFORMATION

Gene Name IGF1 insulin like growth factor 1 [Homo sapiens (human)]

Official Symbol IGF1

Synonyms IGF1; insulin like growth factor 1; IGF; IGF-I; IGFI; MGF; insulin-like growth factor I; insulin-like growth factor 1 (somatomedin C); insulin-like growth factor IB; mechano growth factor; somatomedin-C

Gene ID 3479

mRNA Refseq NM_000618

Protein Refseq NP_000609

MIM 147440

UniProt ID P05019

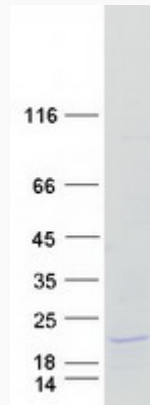
 Tel: 1-631-559-9269 1-516-512-3133

 Email: info@creative-biomart.com  Fax: 1-631-938-8127

 45-1 Ramsey Road, Shirley, NY 11967, USA



SDS-PAGE



Tel: 1-631-559-9269 1-516-512-3133

Email: info@creative-biomart.com Fax: 1-631-938-8127

45-1 Ramsey Road, Shirley, NY 11967, USA