

Recombinant Active Human IGF1 Protein, His-tagged(C-ter)

Cat. No. IGF1-127H Lot. No. (See product label)

SPECIFICATION

Product Overview	Recombinant Active Human IGF1 Protein with His tag (C-ter) was expressed in E. coli.
Species	Human
Source	E.coli
Description	The protein encoded by this gene is similar to insulin in function and structure and is a member of a family of proteins involved in mediating growth and development. The encoded protein is processed from a precursor, bound by a specific receptor, and secreted. Defects in this gene are a cause of insulin-like growth factor I deficiency. Alternative splicing results in multiple transcript variants encoding different isoforms that may undergo similar processing to generate mature protein. [provided by RefSeq, Sep 2015]
Form	Powder
Bio-activity	Determined by its ability to induce MCF-7 cells proliferation. The ED50 for this effect is 0.9-3.1 ng/mL. The specific activity of recombinant human IGF-I is approximately > 1.2 x 10 ³ IU/mg.
AA Sequence	MGPETLCGAELVDALQFVCGDRGFYFNKPTGYGSSRRAPQTGIVDECCFRSCDL RRLEMYCAPLKPAKSA
Endotoxin	Endotoxin level is less than 0.01 EU/μg of the protein, as determined by the LAL test.

 Tel: 1-631-559-9269 1-516-512-3133

 Email: info@creative-biomart.com  Fax: 1-631-938-8127

 45-1 Ramsey Road, Shirley, NY 11967, USA

Purity	> 95% (by SDS-PAGE)
Applications	SDS-PAGE
Notes	For laboratory research only, not for drug, diagnostic or other use.
Storage	Lyophilized protein should be stored at -20°C. After reconstitution, aliquot and store at -20°C or -80°C for up to one month. Storage in frost free freezers is not recommended. Avoid repeated freeze/thaw cycles. Suggest spin the vial prior to opening.
Storage Buffer	PBS (pH 7.4)
Reconstitution	It is recommended to reconstitute the lyophilized protein in sterile water to a concentration not less than 100 µg/mL and incubate the stock solution for at least 20 min at room temperature to make sure the protein is dissolved completely.

GENE INFORMATION

Gene Name	IGF1 insulin-like growth factor 1 (somatomedin C) [Homo sapiens]
Official Symbol	IGF1
Synonyms	IGF1; insulin-like growth factor 1 (somatomedin C); insulin-like growth factor 1; IGF1A; MGF; IGF-IA; IGF-IB; somatomedin-C; mechano growth factor; insulin-like growth factor I; insulin-like growth factor IA; insulin-like growth factor IB; IGF1; IGF-I;
Gene ID	3479
mRNA Refseq	NM_000618

 Tel: 1-631-559-9269 1-516-512-3133

 Email: info@creative-biomart.com  Fax: 1-631-938-8127

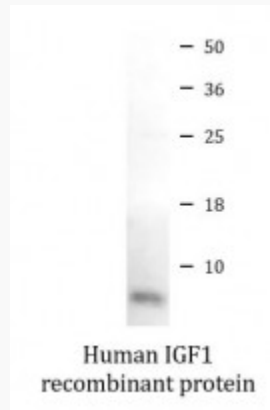
 45-1 Ramsey Road, Shirley, NY 11967, USA

Protein Refseq NP_000609

MIM 147440

UniProt ID P05019

SDS-PAGE



 Tel: 1-631-559-9269 1-516-512-3133

 Email: info@creative-biomart.com  Fax: 1-631-938-8127

 45-1 Ramsey Road, Shirley, NY 11967, USA