

## Active Recombinant Human IGF1 Protein (Gly49-Ala118), C-His tagged, Animal-free, Carrier-free

Cat. No. IGF1-158H Lot. No. (See product label)

### SPECIFICATION

<b>Product Overview</b>	Recombinant Human IGF1 Protein (Gly49-Ala118) with C-His tag was expressed in E. coli and Animal-free as well as Carrier-free.
<b>Species</b>	Human
<b>Source</b>	E.coli
<b>ProteinLength</b>	Gly49-Ala118
<b>Description</b>	Insulin like Growth Factors 1 (IGF-I) is a 7.79 kDa member of the Insulin-like Growth Factors with 71 amino acid residues. IGF-I is mainly expressed from liver, adipose tissue, Endometrial stromal cells, Leydig cells, and can be isolated from plasma. IGF-I mediating the protein anabolic and promoting effect of pituitary growth hormone. IGF-I also affects metabolism of glycogen, DNA synthesis and glucose uptake via binding to IGF-I receptor.
<b>Form</b>	Lyophilized
<b>Bio-activity</b>	Measure by its ability to induce MCF-7 cells proliferation. The ED50 for this effect is 0.9-3.1 ng/mL. The specific activity of recombinant human IGF-I is approximately $>1.2 \times 10^3$ IU/mg.
<b>Molecular Mass</b>	The protein has a calculated MW of 8.59 kDa. The protein migrates as 11 kDa under reducing condition (SDS-PAGE analysis).

 Tel: 1-631-559-9269 1-516-512-3133

 Email: [info@creative-biomart.com](mailto:info@creative-biomart.com)  Fax: 1-631-938-8127

 45-1 Ramsey Road, Shirley, NY 11967, USA

<b>Endotoxin</b>	< 0.01 EU/μg of the protein by the LAL method.
<b>Purity</b>	>95% as determined by SDS-PAGE analysis.
<b>Storage</b>	This product is stable after storage at: -20 centigrade for 12 months in lyophilized state from date of receipt. -20 or -80 centigrade for 1 month under sterile conditions after reconstitution. Avoid repeated freeze/thaw cycles.
<b>Storage Buffer</b>	Lyophilized from a 0.2 μm filtered solution of PBS, pH 7.4.
<b>Reconstitution</b>	It is recommended to reconstitute the lyophilized protein in sterile H <sub>2</sub> O to a concentration not less than 200 μg/mL and incubate the stock solution for at least 20 min to ensure sufficient re-dissolved.
<b>Shipping</b>	The product is shipped with polar packs. Upon receipt, store it immediately at -20 centigrade or lower for long term storage.

## GENE INFORMATION

<b>Gene Name</b>	IGF1 insulin-like growth factor 1 (somatomedin C) [ Homo sapiens (human) ]
<b>Official Symbol</b>	IGF1
<b>Synonyms</b>	IGF1; insulin-like growth factor 1 (somatomedin C); insulin-like growth factor 1; IGF1A; MGF; IGF-IA; IGF-IB; somatomedin-C; mechano growth factor; insulin-like growth factor I; insulin-like growth factor IA; insulin-like growth factor IB; IGF1; IGF-I;
<b>Gene ID</b>	3479
<b>mRNA Refseq</b>	NM_000618

 Tel: 1-631-559-9269 1-516-512-3133

 Email: [info@creative-biomart.com](mailto:info@creative-biomart.com)  Fax: 1-631-938-8127

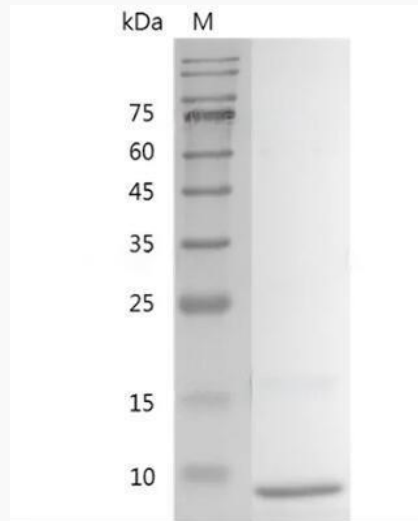
 45-1 Ramsey Road, Shirley, NY 11967, USA

**Protein Refseq** NP\_000609

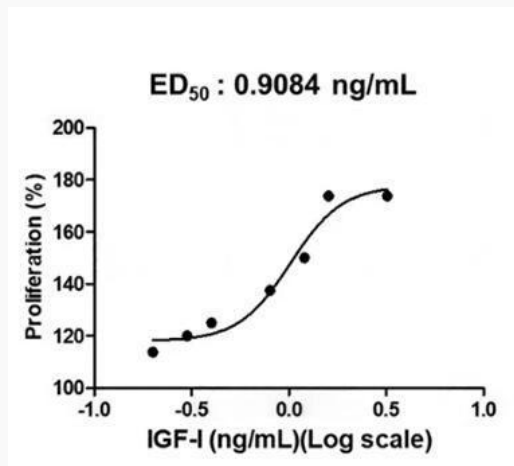
**MIM** 147440

**UniProt ID** P05019

**SDS-PAGE analysis  
of recombinant  
human IGF-I.**



**Activity**



Tel: 1-631-559-9269 1-516-512-3133

Email: [info@creative-biomart.com](mailto:info@creative-biomart.com) Fax: 1-631-938-8127

45-1 Ramsey Road, Shirley, NY 11967, USA



Human IGF-I, His Tag, E. coli (LDG088PHE) induced MCF-7 cell proliferation, with the ED50 at 0.9084 ng/mL.

 Tel: 1-631-559-9269 1-516-512-3133

 Email: [info@creative-biomart.com](mailto:info@creative-biomart.com)  Fax: 1-631-938-8127

 45-1 Ramsey Road, Shirley, NY 11967, USA