

## Recombinant Human IGF1 protein

Cat. No. IGF1-61H Lot. No. (See product label)

### SPECIFICATION

<b>Product Overview</b>	Recombinant Human IGF1 protein(NP_001104754.1) (Gly49-Ala118) was expressed in Yeast.
<b>Species</b>	Human
<b>Source</b>	Yeast
<b>ProteinLength</b>	49-118 aa
<b>Form</b>	Lyophilized from sterile PBS,pH 7.4.
<b>Molecular Mass</b>	The recombinant human IGF1 consists 70 amino acids and predicts a molecular mass of 7.7 kDa.
<b>Purity</b>	> 95 % as determined by SDS-PAGE
<b>Storage</b>	Store it under sterile conditions at -20°C to -80°C upon receiving. Recommend to aliquot the protein into smaller quantities for optimal storage. Avoid repeated freeze-thaw cycles.
<b>Reconstitution</b>	It is recommended that sterile water be added to the vial to prepare a stock solution of 0.2 ug/ul. Centrifuge the vial at 4°C before opening to recover the entire contents.

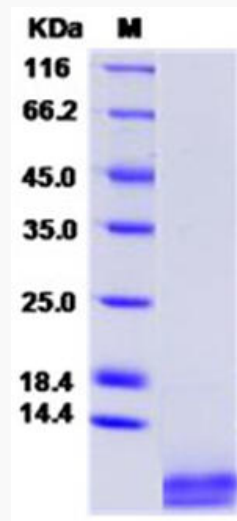
### GENE INFORMATION

 Tel: 1-631-559-9269 1-516-512-3133

 Email: [info@creative-biomart.com](mailto:info@creative-biomart.com)  Fax: 1-631-938-8127

 45-1 Ramsey Road, Shirley, NY 11967, USA

<b>Gene Name</b>	IGF1 insulin-like growth factor 1 (somatomedin C) [ Homo sapiens ]
<b>Official Symbol</b>	IGF1
<b>Synonyms</b>	IGF1; insulin-like growth factor 1 (somatomedin C); insulin-like growth factor 1; IGF1A; MGF; IGF-IA; IGF-IB; somatomedin-C; mechano growth factor; insulin-like growth factor I; insulin-like growth factor IA; insulin-like growth factor IB; IGF-I; IGF-I;
<b>Gene ID</b>	3479
<b>mRNA Refseq</b>	NM_000618
<b>Protein Refseq</b>	NP_000609
<b>MIM</b>	147440
<b>UniProt ID</b>	P05019

**SDS-PAGE**


 Tel: 1-631-559-9269 1-516-512-3133

 Email: [info@creative-biomart.com](mailto:info@creative-biomart.com)  Fax: 1-631-938-8127

 45-1 Ramsey Road, Shirley, NY 11967, USA