

Recombinant Rabbit IGF1 protein, His & GST-tagged

Cat. No. IGF1-815R Lot. No. (See product label)

SPECIFICATION

Product Overview	Recombinant Rabbit IGF1 aa. (Gly33~Lys143 (Accession # Q95222)) fused with N-terminal His & GST tag was produced in E. coli cells.
Species	Rabbit
Source	E.coli
ProteinLength	Gly33~Lys143
Form	Freeze-dried powder
Molecular Mass	Predicted Molecular Mass: 42.6kDa
Endotoxin	<1.0EU per 1g (determined by the LAL method)
Purity	> 95%
Characteristic	The isoelectric point is 9.7.
Applications	SDS-PAGE; WB; ELISA; IP
Stability	The thermal stability is described by the loss rate. The loss rate was determined by accelerated thermal degradation test, that is, incubate the protein at 37°C for 48h, and no obvious degradation and precipitation were observed. The loss rate is less than 5% within the expiration date under appropriate storage condition.

 Tel: 1-631-559-9269 1-516-512-3133

 Email: info@creative-biomart.com  Fax: 1-631-938-8127

 45-1 Ramsey Road, Shirley, NY 11967, USA

Storage	Avoid repeated freeze/thaw cycles. Store at 2-8°C for one month. Aliquot and store at -80°C for 12 months.
Storage buffer	Supplied as lyophilized form in PBS, pH7.4, containing 5% trehalose, 0.01% sarcosyl
Reconstitution	Reconstitute in sterile PBS, pH7.2-pH7.4

GENE INFORMATION

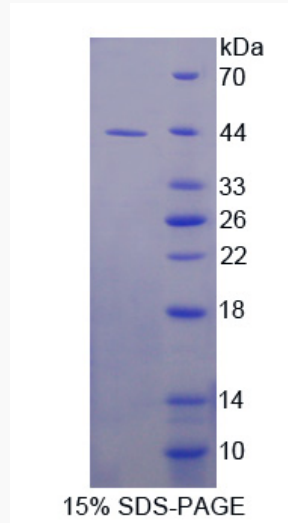
Gene Name	IGF1 insulin like growth factor 1 [<i>Oryctolagus cuniculus</i> (rabbit)]
Official Symbol	IGF1
Synonyms	IGF1; IGF-IB; insulin-like growth factor I; IGF-I; insulin-like growth factor 1 (somatomedin C); insulin-like growth factor IB; somatomedin
Gene ID	100008668
mRNA Refseq	NM_001082026.1
Protein Refseq	NP_001075495.1
UniProt ID	Q95222

 Tel: 1-631-559-9269 1-516-512-3133

 Email: info@creative-biomart.com  Fax: 1-631-938-8127

 45-1 Ramsey Road, Shirley, NY 11967, USA

SDS-PAGE



 Tel: 1-631-559-9269 1-516-512-3133

 Email: info@creative-biomart.com  Fax: 1-631-938-8127

 45-1 Ramsey Road, Shirley, NY 11967, USA