

Recombinant Dog IGF1 Protein, His&GST-tagged

Cat. No. IGF1-986D Lot. No. (See product label)

SPECIFICATION

Product Overview	Recombinant Dog IGF1 Protein (Val22-Met153) with His&GST tag was expressed in E. coli.
Species	Dog
Source	E.coli
ProteinLength	Val22-Met153
Description	The protein encoded by this gene is similar to insulin in function and structure and is a member of a family of proteins involved in mediating growth and development. The encoded protein is processed from a precursor, bound by a specific receptor, and secreted. Defects in this gene are a cause of insulin-like growth factor I deficiency. Alternative splicing results in multiple transcript variants encoding different isoforms that may undergo similar processing to generate mature protein.
Form	Freeze-dried powder
Molecular Mass	Predicted Molecular Mass: 44.6 kDa; Accurate Molecular Mass: 45 kDa
Purity	> 90%
Applications	Positive Control; Immunogen; SDS-PAGE; WB.
Stability	The thermal stability is described by the loss rate. The loss rate was determined by

 Tel: 1-631-559-9269 1-516-512-3133

 Email: info@creative-biomart.com  Fax: 1-631-938-8127

 45-1 Ramsey Road, Shirley, NY 11967, USA

accelerated thermal degradation test, that is, incubate the protein at 37 centigrade for 48h, and no obvious degradation and precipitation were observed. The loss rate is less than 5% within the expiration date under appropriate storage condition.

Storage

Avoid repeated freeze/thaw cycles. Store at 2-8 centigrade for one month. Aliquot and store at -80 centigrade for 12 months.

Storage Buffer

PBS, pH7.4, containing 0.01% SKL, 1mM DTT, 5% Trehalose and Proclin300.

Reconstitution

Reconstitute in 10mM PBS (pH7.4) to a concentration of 0.1-1.0 mg/mL. Do not vortex.

GENE INFORMATION

Gene Name

IGF1 insulin-like growth factor 1 (somatomedin C) [*Canis lupus familiaris*]

Official Symbol

IGF1

Synonyms

IGF1; insulin-like growth factor 1 (somatomedin C); insulin-like growth factor I; somatomedin C; Insulin-like growth factor I; IGF1; IGF-I; IGFA;

Gene ID

610255

mRNA Refseq

NM_001313855

Protein Refseq

NP_001300784

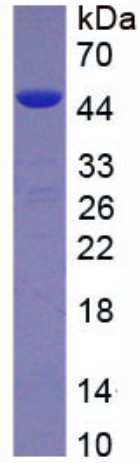
UniProt ID

P33712

 Tel: 1-631-559-9269 1-516-512-3133

 Email: info@creative-biomart.com  Fax: 1-631-938-8127

 45-1 Ramsey Road, Shirley, NY 11967, USA



Tel: 1-631-559-9269 1-516-512-3133

Email: info@creative-biomart.com Fax: 1-631-938-8127

45-1 Ramsey Road, Shirley, NY 11967, USA