

Recombinant Human insulin like growth factor 1 receptor Protein, His tagged

Cat. No. IGF1R-001H Lot. No. (See product label)

SPECIFICATION

Product Overview	Recombinant Human IGF1R Protein with His tag was expressed in E. coli.
Species	Human
Source	E.coli
ProteinLength	741-935 aa
Description	This receptor binds insulin-like growth factor with a high affinity. It has tyrosine kinase activity. The insulin-like growth factor I receptor plays a critical role in transformation events. Cleavage of the precursor generates alpha and beta subunits. It is highly overexpressed in most malignant tissues where it functions as an anti-apoptotic agent by enhancing cell survival. Alternatively spliced transcript variants encoding distinct isoforms have been found for this gene.
Tag	C-His
Molecular Mass	24 kDa
AA Sequence	MDVMQVANTTMSSRSRNTTAADTYNITDPEELETEYPPFFESRVDNKERTVISNLRPF TLYRIDIHSCNHEAEKLGCSASNFVFARTMPAEGADDIPGPVTWEPRPENSIFLKWP EPENPNGLILMYEIKYGSQVEDQRECVSRQEYRKYGGAKLNRLNPGNYTARIQATSL SGNGSWTDPVFFYVQAKTGYENFIHHHHHHHHH

 Tel: 1-631-559-9269 1-516-512-3133

 Email: info@creative-biomart.com  Fax: 1-631-938-8127

 45-1 Ramsey Road, Shirley, NY 11967, USA

Endotoxin	< 1 EU/μg by LAL
Purity	> 90% by SDS-PAGE
Storage	Store it under sterile conditions at -20 to -80 centigrade. It is recommended that the protein be aliquoted for optimal storage. Avoid repeated freeze-thaw cycles.
Storage Buffer	Sterile PBS, pH7.4, 10% Glycerol
Concentration	1 mg/mL by Bradford

GENE INFORMATION

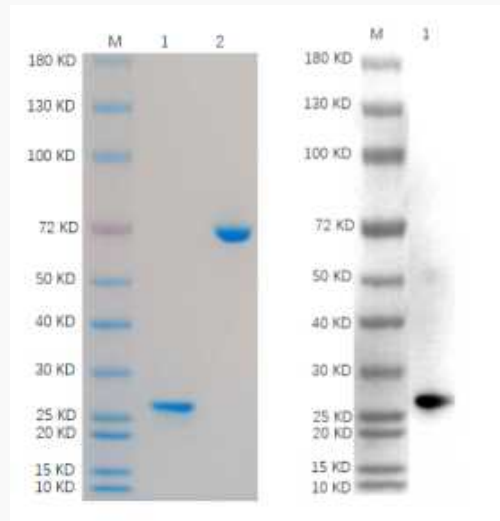
Gene Name	IGF1R insulin like growth factor 1 receptor [Homo sapiens (human)]
Official Symbol	IGF1R
Synonyms	IGF1R; insulin-like growth factor 1 receptor; CD221; IGFI; IGFR; JTK13; MGC18216; IGF-I receptor; soluble IGF1R variant 1; soluble IGF1R variant 2; insulin-like growth factor I receptor; MGC142170; MGC142172
Gene ID	3480
mRNA Refseq	NM_000875
Protein Refseq	NP_000866
MIM	147370
UniProt ID	P08069

 Tel: 1-631-559-9269 1-516-512-3133

 Email: info@creative-biomart.com  Fax: 1-631-938-8127

 45-1 Ramsey Road, Shirley, NY 11967, USA

Reducing 4%-20%
SDS-PAGE (CBB
stained) and WB
(Anti-His Mouse
Monoclonal
antibody) analysis
profiles of purified
IGF1R.



1. IGF1R: 1 μ g

2. BSA: 1 μ g

 Tel: 1-631-559-9269 1-516-512-3133

 Email: info@creative-biomart.com  Fax: 1-631-938-8127

 45-1 Ramsey Road, Shirley, NY 11967, USA