

Recombinant Human IGF1R Protein, C-His-tagged

Cat. No. IGF1R-063H **Lot. No.** (See product label)

SPECIFICATION

Product Overview	Recombinant Human IGF1R Protein with C-His tag was expressed in E. coli.
Species	Human
Source	E.coli
Description	<p>Type I insulin-like growth factor receptor (IGF-IR) is a transmembrane receptor tyrosine kinase that is widely expressed in many cell lines and cell types within fetal and postnatal tissues. Receptor autophosphorylation follows binding of the IGF-I and IGF-II ligands. Three tyrosine residues within the kinase domain (Tyr1131, Tyr1135, and Tyr1136) are the earliest major autophosphorylation sites. Phosphorylation of these three tyrosine residues is necessary for kinase activation. Insulin receptors (IRs) share significant structural and functional similarity with IGF-I receptors, including the presence of an equivalent tyrosine cluster (Tyr1146/1150/1151) within the kinase domain activation loop. Tyrosine autophosphorylation of IRs is one of the earliest cellular responses to insulin stimulation. Autophosphorylation begins with phosphorylation at Tyr1146 and either Tyr1150 or Tyr1151, while full kinase activation requires triple tyrosine phosphorylation.</p>
Molecular Mass	~25 kDa
Purity	Transferred into competent cells and the supernatant was purified by NI column affinity chromatography and the purity is > 85% (by SDS-PAGE).
Notes	For research use only, not for use in diagnostic procedure.

 Tel: 1-631-559-9269 1-516-512-3133

 Email: info@creative-biomart.com  Fax: 1-631-938-8127

 45-1 Ramsey Road, Shirley, NY 11967, USA

Storage	Store at 4 centigrade short term. Aliquot and store at -20 centigrade long term. Avoid freeze-thaw cycles.
Concentration	≥0.5 mg/mL
Storage Buffer	PBS, 4M Urea, pH7.4

GENE INFORMATION

Gene Name	IGF1R insulin-like growth factor 1 receptor [Homo sapiens (human)]
Official Symbol	IGF1R
Synonyms	IGF1R; insulin-like growth factor 1 receptor; CD221; IGFIR; IGFR; JTK13; MGC18216; IGF-I receptor; soluble IGF1R variant 1; soluble IGF1R variant 2; insulin-like growth factor I receptor; MGC142170; MGC142172;
Gene ID	3480
mRNA Refseq	NM_000875
Protein Refseq	NP_000866
MIM	147370
UniProt ID	P08069

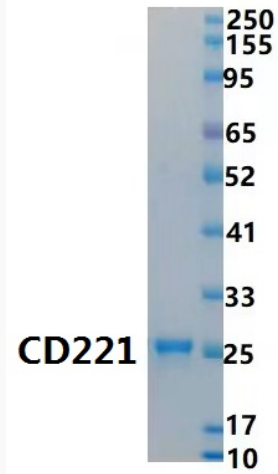
 Tel: 1-631-559-9269 1-516-512-3133

 Email: info@creative-biomart.com  Fax: 1-631-938-8127

 45-1 Ramsey Road, Shirley, NY 11967, USA

SDS-PAGE

SDS-PAGE experiment



 Tel: 1-631-559-9269 1-516-512-3133

 Email: info@creative-biomart.com  Fax: 1-631-938-8127

 45-1 Ramsey Road, Shirley, NY 11967, USA