

## Recombinant Human IGF1R protein, His-Avi-tagged

Cat. No. IGF1R-169H Lot. No. (See product label)

### SPECIFICATION

<b>Product Overview</b>	Recombinant Human IGF1R Protein is expressed from mammalian with a poly-His and Avi tag at the C-terminal. It contains Met1-Asn932.
<b>Species</b>	Human
<b>Source</b>	HEK293
<b>ProteinLength</b>	It contains Met1-Asn932 .
<b>Description</b>	IGF-I receptor is a disulfide-linked heterotetrameric transmembrane protein consisting of two alpha and two beta subunits. Both the alpha and beta subunits are encoded within a single receptor precursor cDNA. Binds IGF1 with high affinity and IGF2 and insulin (INS) with a lower affinity. The activated IGF1R is involved in cell growth and survival control. IGF1R is crucial for tumor transformation and survival of malignant cell. Ligand binding activates the receptor kinase, leading to receptor autophosphorylation, and tyrosines phosphorylation of multiple substrates, that function as signaling adapter proteins including, the insulin-receptor substrates (IRS1/2), Shc and 14-3-3 proteins.
<b>Form</b>	Supplied as 0.22um filtered solution in PBS (pH 7.4).
<b>Molecular Mass</b>	The Protein has a calculated MW of 81 kDa (alpha subunit) and 23 kDa (beta subunit) .As a result of glycosylation, the protein migrates to 110-120kDa(alpha subunit) and 52-55KDa(beta subunit) based on Bis-Tris PAGE.

 Tel: 1-631-559-9269 1-516-512-3133

 Email: [info@creative-biomart.com](mailto:info@creative-biomart.com)  Fax: 1-631-938-8127

 45-1 Ramsey Road, Shirley, NY 11967, USA

<b>Endotoxin</b>	Less than 0.01EU per ug by the LAL method.
<b>Purity</b>	> 95% as determined by Bis-Tris PAGE; > 95% as determined by HPLC
<b>Storage</b>	The product should be stored at -70°C. Please do not repeated freeze-thaw cycles.
<b>Reconstitution</b>	It is recommended that sterile water be added to the vial to prepare a stock solution of 0.2 ug/ul. Centrifuge the vial at 4°C before opening to recover the entire contents.

## GENE INFORMATION

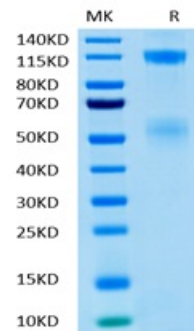
<b>Gene Name</b>	IGF1R insulin-like growth factor 1 receptor [ Homo sapiens ]
<b>Official Symbol</b>	IGF1R
<b>Synonyms</b>	CD221 antigen; CD221; EC 2.7.10; EC 2.7.10.1; IGF1R; IGF-1R; IGF-I R; IGF-I receptor; IGFIR; IGF-IR; IGFR; insulin-like growth factor 1 receptor; Insulin-like growth factor I receptor; JTK13; MGC142170; MGC142172; MGC18216; soluble IGF1R variant 1; soluble IGF1R variant 2
<b>Gene ID</b>	3480
<b>mRNA Refseq</b>	NM_000875
<b>Protein Refseq</b>	NP_000866
<b>MIM</b>	147370
<b>UniProt ID</b>	P08069

 Tel: 1-631-559-9269 1-516-512-3133

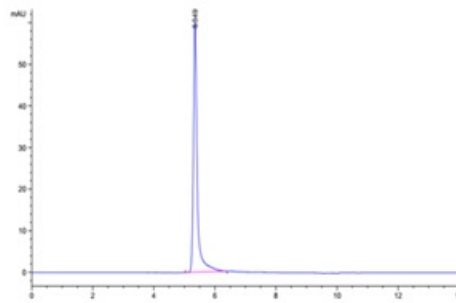
 Email: [info@creative-biomart.com](mailto:info@creative-biomart.com)  Fax: 1-631-938-8127

 45-1 Ramsey Road, Shirley, NY 11967, USA

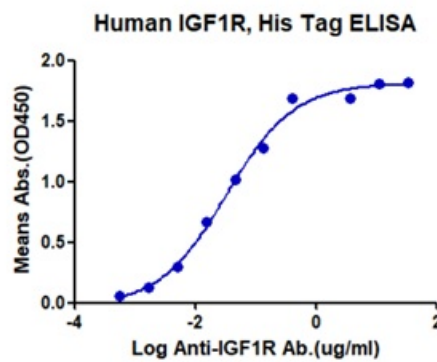
**Tris-Bis PAGE**



**HPLC data**



**ELISA data**



 Tel: 1-631-559-9269 1-516-512-3133

 Email: [info@creative-biomart.com](mailto:info@creative-biomart.com)  Fax: 1-631-938-8127

 45-1 Ramsey Road, Shirley, NY 11967, USA