

Active Recombinant Human IGF1R protein, His-tagged

Cat. No. IGF1R-180H **Lot. No.** (See product label)

SPECIFICATION

Product Overview	Active Recombinant Human IGF1R protein(P08069)(Glu31-Asn932) is expressed from HEK293 with His tag at the C-terminus.
Species	Human
Source	HEK293
ProteinLength	31-932 aa
Form	Lyophilized from 0.22 µm filtered solution in PBS (pH 7.4).
Bio-activity	Immobilized Human IGF1R, His Tag at 5µg/ml (100µl/well) on the plate. Dose response curve for Human IGFI, hFc Tag with the EC50 of 0.90µg/ml determined by ELISA.
Molecular Mass	The protein has a predicted MW of 80.4 kDa (alpha subunit) and 24.1 kDa (beta subunit). Due to the furin cleavage site and glycosylation, the protein migrates to 110-130 kDa and 45-55 kDa based on Bis-Tris PAGE result.
Endotoxin	Less than 1 EU per µg by the LAL method.
Purity	> 95% as determined by Bis-Tris PAGE > 90% as determined by HPLC
Storage	-20 to -80°C for 12 months as supplied from date of receipt. -80°C for 3 months after reconstitution. Recommend to aliquot the protein into smaller quantities for optimal

 Tel: 1-631-559-9269 1-516-512-3133

 Email: info@creative-biomart.com  Fax: 1-631-938-8127

 45-1 Ramsey Road, Shirley, NY 11967, USA

storage. Please minimize freeze-thaw cycles.

Reconstitution Dissolve the lyophilized protein in distilled water.

GENE INFORMATION

Gene Name IGF1R insulin-like growth factor 1 receptor [Homo sapiens]

Official Symbol IGF1R

Synonyms IGF1R; insulin-like growth factor 1 receptor; CD221; IGFI; IGFR; JTK13; MGC18216; IGF-I receptor; soluble IGF1R variant 1; soluble IGF1R variant 2; insulin-like growth factor I receptor; MGC142170; MGC142172;

Gene ID 3480

mRNA Refseq NM_000875

Protein Refseq NP_000866

MIM 147370

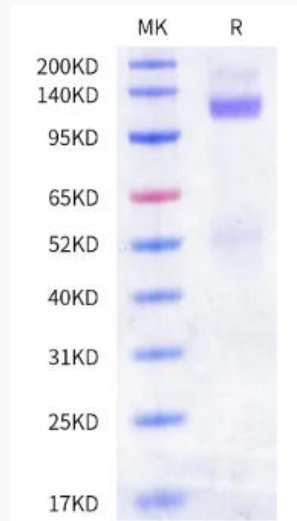
UniProt ID P08069

 Tel: 1-631-559-9269 1-516-512-3133

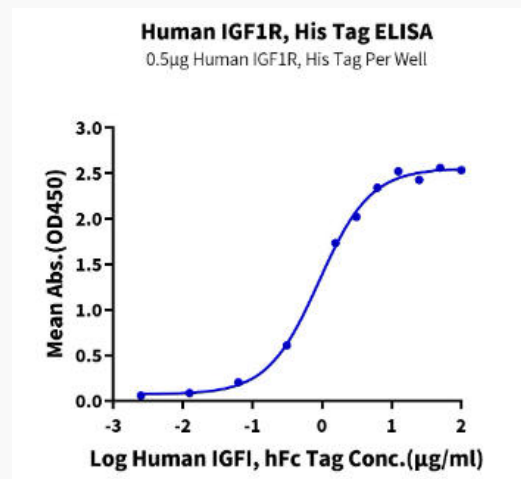
 Email: info@creative-biomart.com  Fax: 1-631-938-8127

 45-1 Ramsey Road, Shirley, NY 11967, USA

Bis-Tris PAGE



ELISA Data



Tel: 1-631-559-9269 1-516-512-3133

Email: info@creative-biomart.com Fax: 1-631-938-8127

45-1 Ramsey Road, Shirley, NY 11967, USA