

## Recombinant Human IGF1R Protein (Met1-Asn932), C-His tagged

Cat. No. IGF1R-4257H    Lot. No. (See product label)

### SPECIFICATION

<b>Product Overview</b>	Recombinant human IGF1R (Met1-Asn932) fused with the C-terminal His tag was expressed in Mammalian cells.
<b>Species</b>	Human
<b>Source</b>	Mammalian Cells
<b>ProteinLength</b>	Met1-Asn932
<b>Form</b>	Lyophilized powder/frozen liquid
<b>Molecular Mass</b>	102.52 kDa
<b>Endotoxin</b>	< 1.0 EU/μg of the protein as determined by the LAL method.
<b>Purity</b>	>90% as determined by SDS-PAGE.
<b>Notes</b>	For research use only.
<b>Storage</b>	Use a manual defrost freezer and avoid repeated freeze thaw cycles. Store at 2 to 8 centigrade for one week. Store at -20 to -80 centigrade for twelve months from the date of receipt.
<b>Storage Buffer</b>	Supplied as solution form in PBS or lyophilized from PBS.

 Tel: 1-631-559-9269    1-516-512-3133

 Email: [info@creative-biomart.com](mailto:info@creative-biomart.com)     Fax: 1-631-938-8127

 45-1 Ramsey Road, Shirley, NY 11967, USA

**Reconstitution** Reconstitute in sterile water for a stock solution.

**Shipping** They are shipped out with dry ice/blue ice unless customers require otherwise.

## GENE INFORMATION

**Gene Name** IGF1R insulin-like growth factor 1 receptor [ Homo sapiens (human) ]

**Official Symbol** IGF1R

**Synonyms** IGF1R; insulin-like growth factor 1 receptor; CD221; IGFI R; IGFR; JTK13; MGC18216; IGF-I receptor; soluble IGF1R variant 1; soluble IGF1R variant 2; insulin-like growth factor I receptor; MGC142170; MGC142172;

**Gene ID** 3480

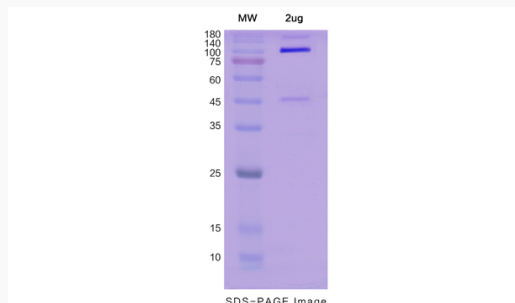
**mRNA Refseq** NM\_000875

**Protein Refseq** NP\_000866

**MIM** 147370

**UniProt ID** P08069

### SDS-PAGE



 Tel: 1-631-559-9269 1-516-512-3133

 Email: [info@creative-biomart.com](mailto:info@creative-biomart.com)  Fax: 1-631-938-8127

 45-1 Ramsey Road, Shirley, NY 11967, USA