

Recombinant Full Length Human IGF1R Protein, C-Flag-tagged

Cat. No. IGF1R-453HFL Lot. No. (See product label)

SPECIFICATION

Product Overview	Recombinant Full Length Human IGF1R Protein, fused to Flag-tag at C-terminus, was expressed in Mammalian cells.
Species	Human
Source	Mammalian Cells
Description	This receptor binds insulin-like growth factor with a high affinity. It has tyrosine kinase activity. The insulin-like growth factor I receptor plays a critical role in transformation events. Cleavage of the precursor generates alpha and beta subunits. It is highly overexpressed in most malignant tissues where it functions as an anti-apoptotic agent by enhancing cell survival. Alternatively spliced transcript variants encoding distinct isoforms have been found for this gene.
Form	25 mM Tris HCl, pH 7.3, 100 mM glycine, 10% glycerol.
Molecular Mass	81 kDa
AA Sequence	MKSGSGGGSPSTSLWGLLFLSAALSLWPTSGEICGPGIDIRNDYQQLKRENCTVIEG YLHILLISKAEDY RSYRFPKLTVITEYLLLFRVAGLESLGDLFPNLTVIRGWKLFYNYAL VIFEMTNLKDIGLYNLRNITRGA IRIEKNADLCYLSTVDWSLILDVSNNYIVGNKPPK ECGDLCPGTMEEKPMCEKTTINNEYNYRCWTTNR CQKMCPSTCGKRACTENNEC CHPECLGSCSAPDNDTACVACRHYYYAGVCVPACPPNTYRFEGWRCVDRD FCAN ILSAESSDSEGFIHDGECMQECPSGFIRNGSQSMYCIPCEGPCPKVCEEEKTKTI DSVTSAQML QGCTIFKGNLLINIRRGNNIASELENFMGLIEVVTGYVKIRHSHALVLSL

 Tel: 1-631-559-9269 1-516-512-3133

 Email: info@creative-biomart.com  Fax: 1-631-938-8127

 45-1 Ramsey Road, Shirley, NY 11967, USA



FLKNLRLILGEEQLEGNYSF YVLDNQNLQQLWDWDHRNLTIKAGKMYFAFNPCLCV
 SEIYRMEEVTGKGRQSKGDINTRNNGERASCES DVLHFTSTTTSKNRIITWHRYR
 PPDYRDLISFTVYYKEAPFKNVTEYDGGDACGSNSWNMVDVDLPPNK DVEPGILLH
 GLKPWTQYAVYVKAVTLTMVENDHIRGAKSEILYIRTNASVPSIPLDVLSASNSSSQLI
 VK WNPPSLPNGNLSYYIVRWQRQPQDGYLYRHNYCSKDKIPIRKYADGTIDIEEVTE
 NPKTEVCGGEKGPCC ACPKTEAEKQAEKEEAAYRKVFENFLHNSIFVPRPERKRR
 DVMQVANTTMSSRSRNTTAADTYNITDPEE LETEYPPFESRVDNKERTVISNLRPFT
 LYRIDIHSCNHEAEKLGCSASNFFVARTMPAEGADDIPGPVTW EPRPENSIFLKWPE
 PENPNGLILMYEIKYGSQVEDQRECVSRQEYRKYGGAKLNRLNPGNYTARIQATSL
 SGNGSWTDPVFFYVQAKTGYENFIHLIILPVAVLLIVGGLVIMLYVFHRKRNSRLG
 NGVLYASVNPEY FSAADVVPDEWEVAREKITMSRELGGQSGFMVYEGVAKGVVK
 DEPETRVAIKTVNEAASMRERIEFLNE ASVMKEFNCHHVRLLGVV SQGQPTLVIME
 LMTRGDLKSYLRSLRPEMENNPVLAPPSLSKMIQMAGEIA DGMAYLNANKFVHRDL
 AARNCMVAEDFTVKIGDFGMTRDIYETDYRKGKGLLPVRWMSPELKDGVFT T
 YSDVWSFGVVLWEIATLAEQPYQGLSNEQVLRVMEGGLLDKPDNCPDMLFELMR
 MCWQYNPKMRPSFL EIISSIKEEMEPGFREVSVFYSEENKLPEPEELDLEPENMES
 VPLDPSASSSSLPLPDRHSGHKAENGGP
 PGVLVLRASFDERQPYAHMNGGRKNERALPLPQSSTCTRTRPLEQKLISEEDLAAN
 DILDYKDDDDKV

Purity	> 80% as determined by SDS-PAGE and Coomassie blue staining.
Stability	Stable for 12 months from the date of receipt of the product under proper storage and handling conditions. Avoid repeated freeze-thaw cycles.
Storage	Store at -80 centigrade.
Concentration	>50 ug/mL as determined by microplate BCA method.
Preparation	Recombinant protein was captured through anti-DDK affinity column followed by

Tel: 1-631-559-9269 1-516-512-3133

Email: info@creative-biomart.com Fax: 1-631-938-8127

45-1 Ramsey Road, Shirley, NY 11967, USA

conventional chromatography steps.

Protein Families Druggable Genome, Protein Kinase, Transmembrane

Protein Pathways Adherens junction, Colorectal cancer, Endocytosis, Focal adhesion, Glioma, Long-term depression, Melanoma, Oocyte meiosis, Pathways in cancer, Progesterone-mediated oocyte maturation, Prostate cancer

Full Length Full L.

GENE INFORMATION

Gene Name IGF1R insulin like growth factor 1 receptor [Homo sapiens (human)]

Official Symbol IGF1R

Synonyms IGFR; CD221; IGFI; JTK13

Gene ID 3480

mRNA Refseq NM_000875.5

Protein Refseq NP_000866.1

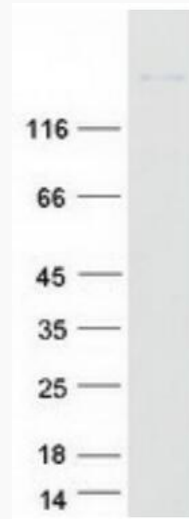
MIM 147370

UniProt ID P08069

 Tel: 1-631-559-9269 1-516-512-3133

 Email: info@creative-biomart.com  Fax: 1-631-938-8127

 45-1 Ramsey Road, Shirley, NY 11967, USA



Coomassie blue staining of purified IGF1R protein.

 Tel: 1-631-559-9269 1-516-512-3133

 Email: info@creative-biomart.com  Fax: 1-631-938-8127

 45-1 Ramsey Road, Shirley, NY 11967, USA