

## Recombinant Human IGF1R protein, His-tagged

Cat. No. IGF1R-5027H Lot. No. (See product label)

### SPECIFICATION

<b>Product Overview</b>	Recombinant Human IGF1R protein(P08069)(763-931aa), fused to N-terminal His tag, was expressed in HEK293.
<b>Species</b>	Human
<b>Source</b>	HEK293
<b>ProteinLength</b>	763-931aa
<b>Form</b>	If the delivery form is liquid, the default storage buffer is Tris/PBS-based buffer, 5%-50% glycerol. If the delivery form is lyophilized powder, the buffer before lyophilization is Tris/PBS-based buffer, 6% Trehalose, pH 8.0.
<b>Molecular Mass</b>	21.9 kDa
<b>Purity</b>	Greater than 85% as determined by SDS-PAGE.
<b>Storage</b>	Store at -20°C/-80°C upon receipt, aliquoting is necessary for multiple use. Avoid repeated freeze-thaw cycles.
<b>Reconstitution</b>	Please reconstitute protein in deionized sterile water to a concentration of 0.1-1.0 mg/mL. We recommend to add 5-50% of glycerol (final concentration) and aliquot for long-term storage at -20°C/-80°C. Our default final concentration of glycerol is 50%.

 Tel: 1-631-559-9269 1-516-512-3133

 Email: [info@creative-biomart.com](mailto:info@creative-biomart.com)  Fax: 1-631-938-8127

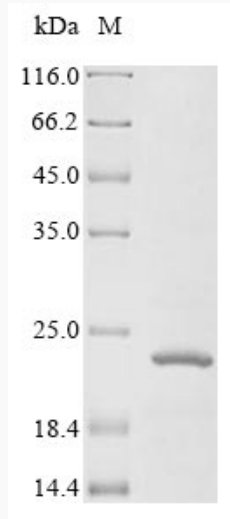
 45-1 Ramsey Road, Shirley, NY 11967, USA

**GENE INFORMATION**

<b>Gene Name</b>	IGF1R insulin-like growth factor 1 receptor [ Homo sapiens ]
<b>Official Symbol</b>	IGF1R
<b>Synonyms</b>	IGF1R; insulin-like growth factor 1 receptor; CD221; IGFIR; IGFR; JTK13; MGC18216; IGF-I receptor; soluble IGF1R variant 1; soluble IGF1R variant 2; insulin-like growth factor I receptor; MGC142170; MGC142172;
<b>Gene ID</b>	3480
<b>mRNA Refseq</b>	NM_000875
<b>Protein Refseq</b>	NP_000866
<b>MIM</b>	147370
<b>UniProt ID</b>	P08069

 Tel: 1-631-559-9269 1-516-512-3133 Email: [info@creative-biomart.com](mailto:info@creative-biomart.com)  Fax: 1-631-938-8127 45-1 Ramsey Road, Shirley, NY 11967, USA

**SDS-PAGE**



 Tel: 1-631-559-9269 1-516-512-3133

 Email: [info@creative-biomart.com](mailto:info@creative-biomart.com)  Fax: 1-631-938-8127

 45-1 Ramsey Road, Shirley, NY 11967, USA