

Recombinant Canine IGF1R Protein, His-tagged

Cat. No. IGF1R-50C Lot. No. (See product label)

SPECIFICATION

Product Overview	Recombinant Canine IGF1R Protein, fused to His-tag, was expressed in HEK293.
Species	Canine
Source	HEK293
Description	This receptor binds insulin-like growth factor with a high affinity. It has tyrosine kinase activity. The insulin-like growth factor I receptor plays a critical role in transformation events. Cleavage of the precursor generates alpha and beta subunits. It is highly overexpressed in most malignant tissues where it functions as an anti-apoptotic agent by enhancing cell survival. Alternatively spliced transcript variants encoding distinct isoforms have been found for this gene.
Form	PBS, pH7.4
Molecular Mass	103 kDa
AA Sequence	EICGPGIDIRNDYQQLKRELNCTVIEGYLHILLISKAEDYRSYRFPKLTVITEYLLLFRVA GLESGLDLFPNLTVIRGWKLFYNYALVIFEMTNLKDIGLYNLRNITRGAIRIEKNADLCY LSTVDWSLILDVAVSNNYIVGNKPPKECGDLCPGTMEKPLCEKTTINNEYNYRCWTT NRCQKMCPSACGKRACTENNECCHPECLGSCSAPDNDTACVACRHYYYAGVCVP TCPPNTYRFEGWRCVDRDFCANIPSAESSDSEGFVIHDGECMQECPSGFIRNGSQS MYCIPCEGPCPKVCEEEKTKTIDSVTSAQMLQGCTIFKGNLLINIRRGNNIASELENF MGLIEVVTGYVKIRHSHALVSLSFLKNLRQILGEEQLEGNYSFYVLDNQNLQQLWDW DHRNLTIKAGKMYFAFNPKLCVSEIYRMEEVTGTKGRQSKGDINTRNNGERASCES

 Tel: 1-631-559-9269 1-516-512-3133

 Email: info@creative-biomart.com  Fax: 1-631-938-8127

 45-1 Ramsey Road, Shirley, NY 11967, USA

DVLHFTSTTTWKNRIITWHRYRPPDYRDLISFTVYYKEAPFKNVTEYDGQDACGSN
 SWNMVDVDLPPNKDVEPGILLHGLKPWTQYAVYVKAVTLTMVENDHIRGAKSEILYI
 RTNASVPSIPLDVLSASNSSSQLIVKWNPPSLPNGNLSYYIVRWQRQPQDSYLYRHN
 YCSKDKIPIRKYADGTIDVEEV TENPKTEVCGGEKGPCCACPKTEAEKQAEKEEAEY
 RKVFENFLHNSIFVPRPERKRRDVTQVTNTTMSRSRNTTVVDTYNITDPEELETEY
 PFFESRVDNKERTVISNLRPFTLYRIDIHSCNHEAEKLGCSASN FVFARTMPAEGAD
 DIPGPVTWESRPENSIFLKWPEPENPNGLILMYEIKYGSQIEDQREC VSRQEYRKYG
 GAKLNRLNPGNYTARIQATSLSGNGSWTDPVFFYVPAKITYENHHHHHHH

Purity >90%

Storage Store it under sterile conditions at -20 to -80 centigrade. It is recommended that the protein be aliquoted for optimal storage. Avoid repeated freeze-thaw cycles.

Concentration 0.25 mg/ml

GENE INFORMATION

Gene Name IGF1R insulin like growth factor 1 receptor [Homo sapiens (human)]

Official Symbol IGF1R

Synonyms IGFR; CD221; IGFI R; JTK13

Gene ID 3480

mRNA Refseq NM_000875

Protein Refseq NP_000866

MIM 147370

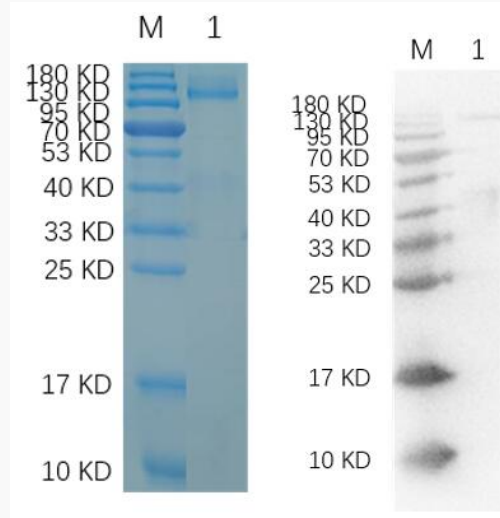
 Tel: 1-631-559-9269 1-516-512-3133

 Email: info@creative-biomart.com  Fax: 1-631-938-8127

 45-1 Ramsey Road, Shirley, NY 11967, USA

UniProt ID **P56950**

SDS-PAGE



Reducing 12% SDS-PAGE and WB analysis profile of purified IGF1R-01C.

 Tel: 1-631-559-9269 1-516-512-3133

 Email: info@creative-biomart.com  Fax: 1-631-938-8127

 45-1 Ramsey Road, Shirley, NY 11967, USA